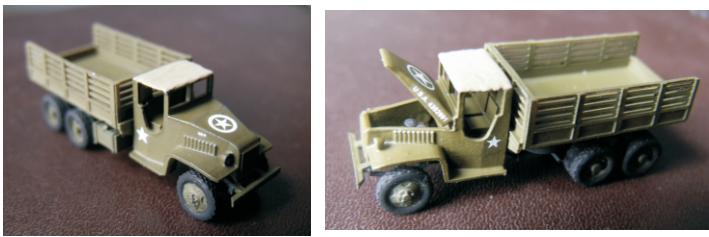


Assembly Instructions For N-Scale GMC CCKW 2 ½ ton Cargo Trucks



www.eaelec.com

Made in Canada
Decals Printed in the USA

Introduced in April 1943 the canvas covered cab version of the CCKW military truck replaced the earlier metal closed cab type. Over 155,000 of these trucks were produced. This kit is available with either open or covered cargo bed and open or closed hood.

Parts Included in the kit:

- A. 3D printed chassis
- B. 3D printed cab
- C. 3D printed cargo bed
- D. One decal sheet

Required to complete the kit:

Paint - Flat black, silver, canvas, medium gray, glosscoat, dullcoat

Paint - Flat army olive (Testors 1165 or Tamiya XF49)

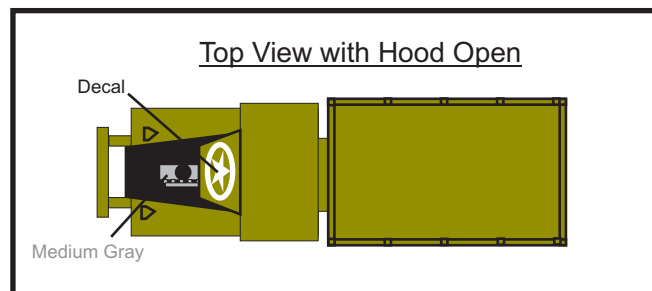
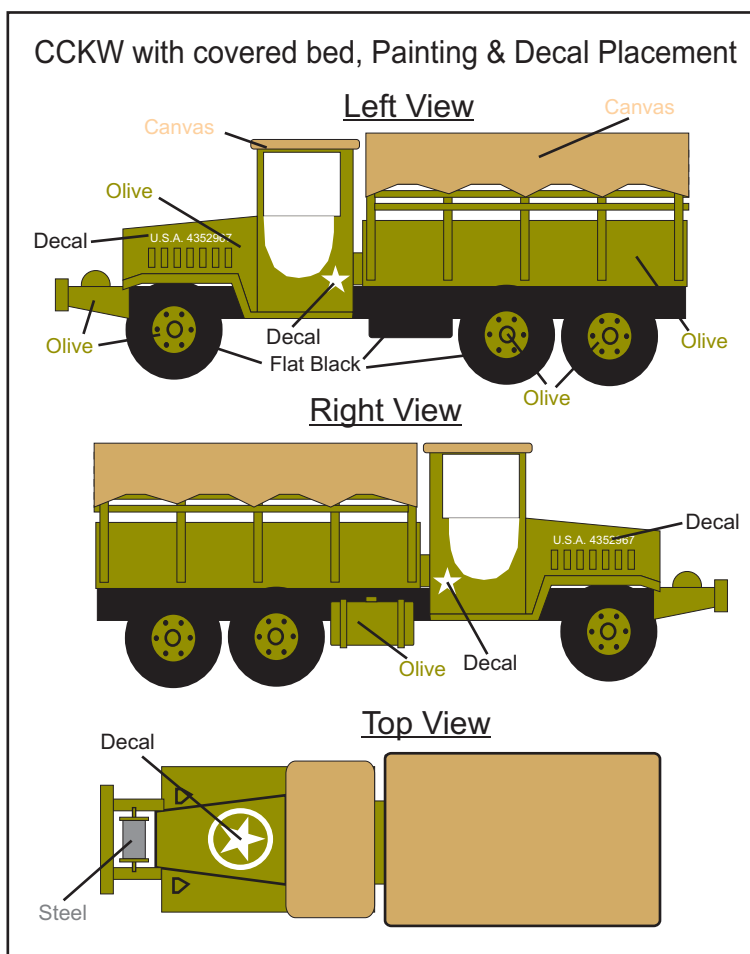
Glue - Slow setting CA is best.

Tools Required:

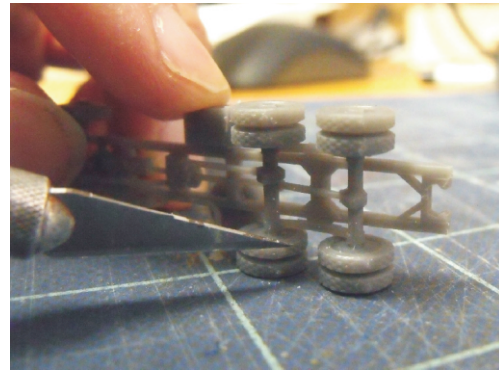
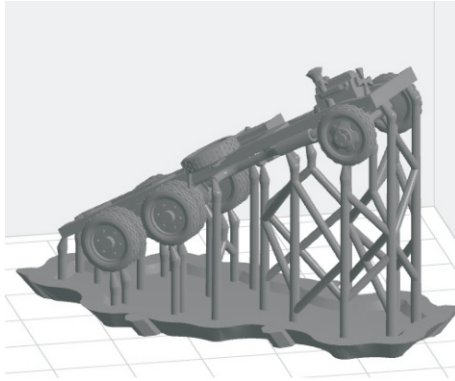
1. X-acto knife with a sharp #11 blade.
2. #400 and #600 sandpaper.

WARNING: CHOKING HAZARD
Keep out of reach of small children!

Note that these ARE NOT TOYS, AND ARE NOT INTENDED FOR USE BY CHILDREN UNDER AGE OF 14. These products are model railroad equipment and accessories intended for use by adults.



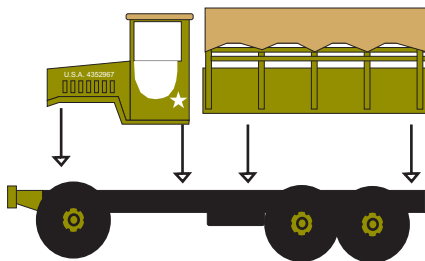
The 3D printing process requires a supporting frame during printing, see below left. The printed part is cut from the frame using flush cutters and this sometimes leaves small bumps on the part. Use a knife with a sharp new blade to cut away the bumps. When trimming bumps off the wheels you should place the wheel on a flat surface as shown below on the right. Putting too much stress on the wheel can cause the axle to break. For bumps on the cab body, sanding is recommended.



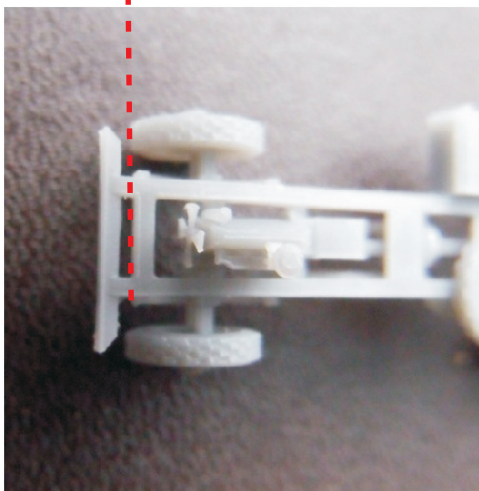
After cleaning up the bumps, paint the both the cab and the cargo bed flat army olive and the entire chassis flat black. Once these have dried, paint the wheel hubs, fuel tank and front bumper olive. The engine is painted medium gray with black fan blades and air cleaner. Apply a coat of gloss to the cab, let dry and then place the decals as show below. After the decals are completely dry, apply dullcoat to the cab.

When everything is dry, glue the cab and the cargo bed onto the chassis using CA glue. See photo below for cab alignment.

Final Assembly

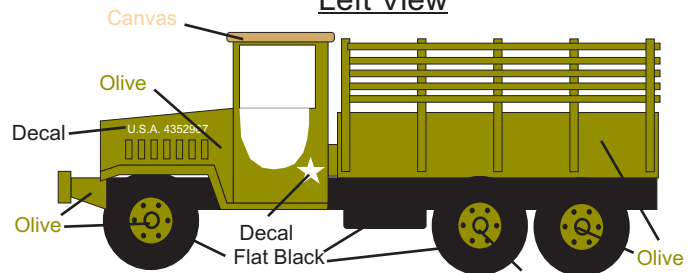


When gluing the cab to chassis, front of the cab should extend to red line

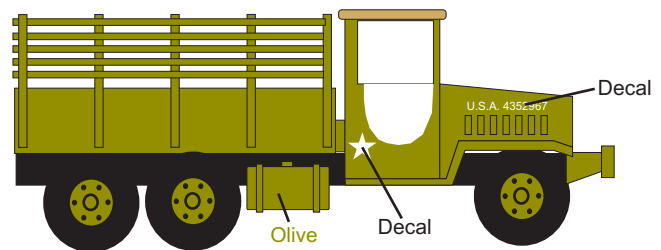


CCKW, Open Bed, Painting & Decal Placement

Left View



Right View



Top View

