

Assembly Instructions For N-Scale GMC CCKW 2 ½ ton Tanker Truck

WARNING: CHOKING HAZARD
Keep out of reach of small
children!

Note that these ARE NOT TOYS,
AND ARE NOT INTENDED FOR
USE BY CHILDREN UNDER
AGE OF 14. These products are
model railroad equipment and
accessories intended for use by
adults.



www.eaelec.com

Made in Canada
Decals Printed in the USA

Introduced in April 1943 the canvas covered cab version of the CCKW military truck replaced the earlier metal closed cab type. Over 155,000 of these trucks were produced. This kit is the fuel tanker version of the CCKW. This model is available with or without the winch mounted behind the front bumper.

Parts Included in the kit:

- A. 3D printed chassis
- B. 3D printed cab
- C. 3D printed tanker bed
- D. One decal sheet

Required to complete the kit:

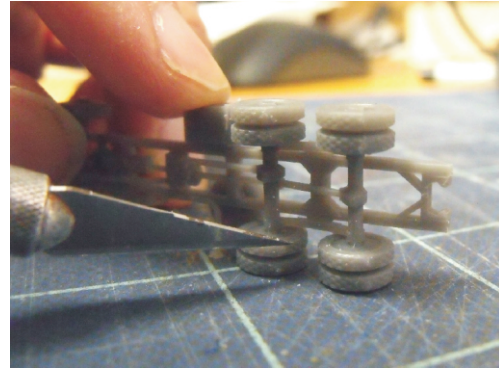
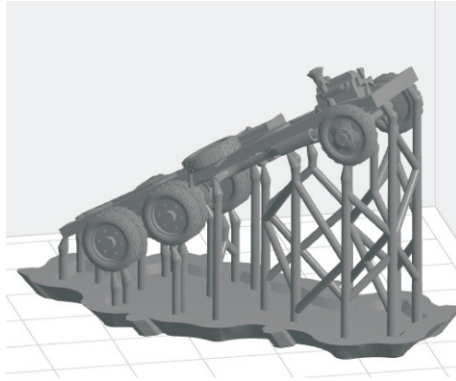
Paint - Flat black, flat steel, canvas, glosscoat, dullcoat
and Flat army olive (Testors 1165 or Tamiya XF49)

Glue - Slow setting CA is best.

Tools Required:

- 1. X-acto knife with a sharp #11 blade.
- 2. #400 and #600 sandpaper.

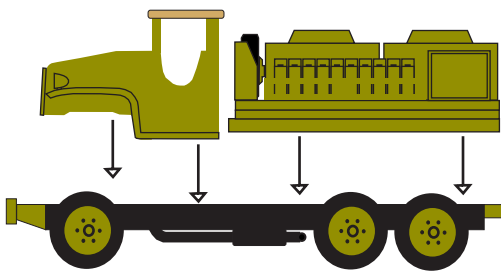
The 3D printing process requires a supporting frame during printing, see below left. The printed part is cut from the frame using flush cutters and this sometimes leaves small bumps on the part. Use a knife with a sharp new blade to cut away the bumps. When trimming bumps off the wheels you should place the wheel on a flat surface as shown below on the right. Putting too much stress on the wheel can cause the axle to break. For bumps on the cab body, sanding is recommended.



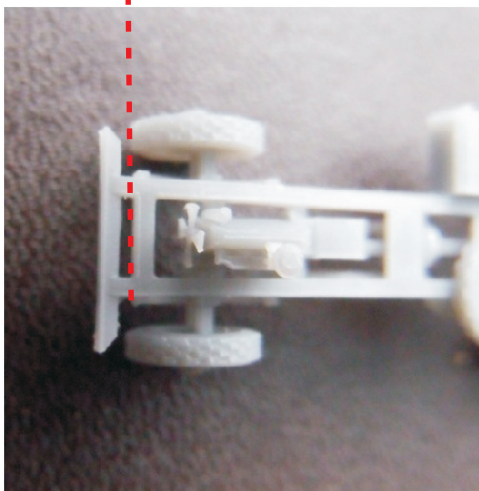
After cleaning up the bumps, paint the both the cab and the tanker bed flat olive and the entire chassis flat black. Once these have dried paint the wheel hubs, fuel tank and front bumper olive using a fine brush (see Painting guide below). If truck is equipped with a winch, paint the winch as shown below. Apply a coat of gloss to the cab/cargo bed, let dry and then place the decals as show below. After the decals are completely dry, apply dullcoat to the cab.

When everything is dry, glue the cab and the tanker bed onto the chassis using CA glue. See photo below for cab alignment.

Final Assembly

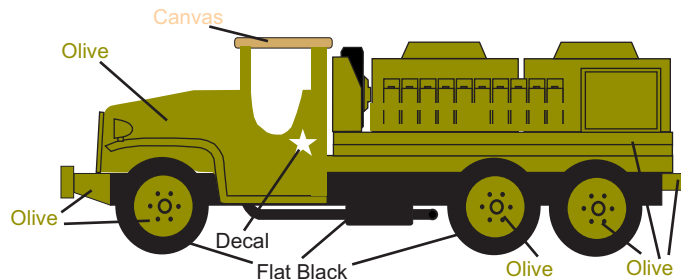


When gluing the cab to chassis, front of the cab should extend to red line

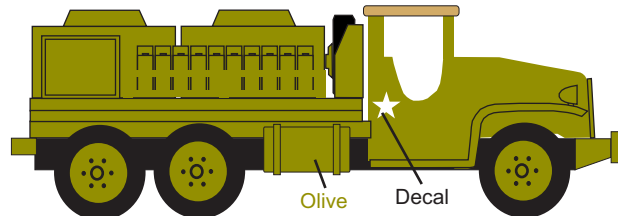


CCKW Fuel Tanker, Painting & Decal Placement

Left View



Right View



Top View

