

Assembly Instructions For TT-Scale Ford C Series Truck Kit



www.eaelec.com
Made in Canada

WARNING: CHOKING HAZARD
Keep out of reach of small children!

NOTE: THESE ARE NOT TOYS, AND ARE NOT INTENDED FOR USE BY CHILDREN UNDER AGE OF 14. These products are model railroad equipment and accessories intended for use by adults.

This kit is a scale model of a Ford C600 medium duty truck. The C series was a cab-over-engine design introduced in 1957. The kit contains all the parts needed to build a propane tanker.

3D printed parts Included in the kit:

- A. chassis
- B. cab
- C. propane tanker bed
- D. cab interior
- E. front wheels
- F. rear wheels
- G. fire extinguisher

Also included: 1 decal sheet.

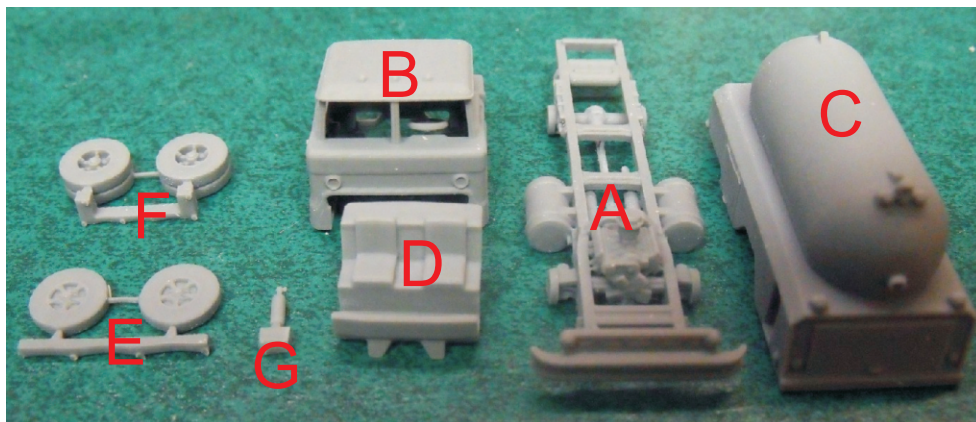
Required to complete the kit:
Paint - see painting guide on page 2.
Glue - Slow setting CA is best.
Tools -

1. X-acto knife with a sharp #11 blade.
2. #400 and #600 sandpaper.

Decal Sheet

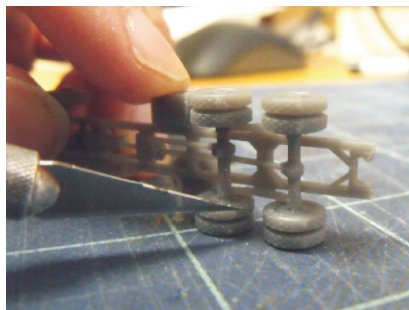
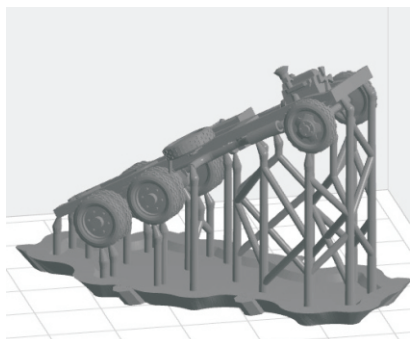


Parts For Propane Truck



The 3D printing process requires a supporting frame during printing, see below. The printed part is cut from the frame using flush cutters and this sometimes leaves small bumps on the part. Use a knife with a sharp new blade to cut away the bumps. When trimming bumps off the wheels you should place the wheel on a flat surface as shown below. Putting too much stress on the wheel can cause the axle to break. For bumps on the cab body, sanding is recommended.

After cleaning up the bumps, paint the parts and apply the decals as shown on the painting guide on page 2. When everything is dry, proceed to final assembly, using CA glue.



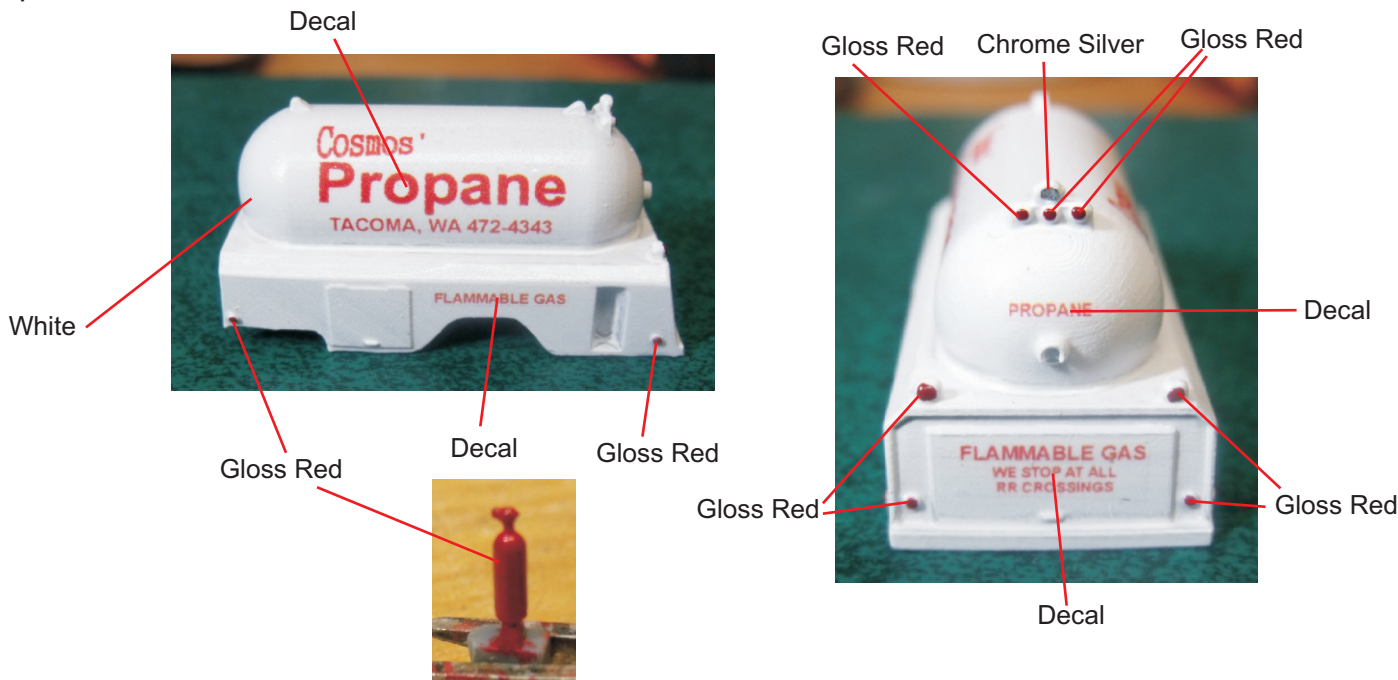
Preparing the Decals

Important -The decals must be cut apart (as shown on the right) just inside the dotted lines before immersing them in water.



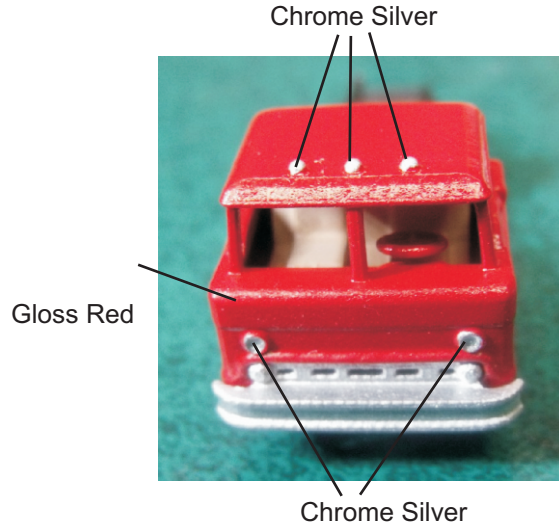
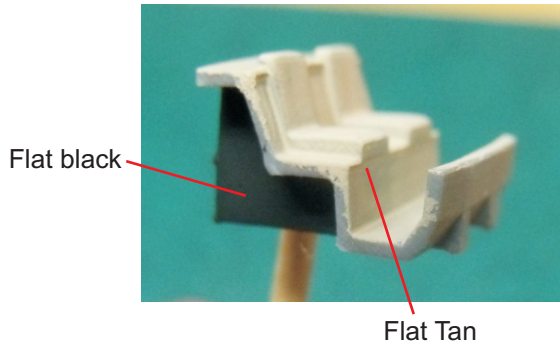
Painting Guide For Propane Bed

I airbrushed the bed flat white using Tamiya XF-2, then sprayed it with gloss coat before applying the decals. I applied paint to the signal lights, reflectors & spotlight using a toothpick. The fire extinguisher was brushed painted gloss red. After the decals dried, I sprayed with glosscoat again to preserve the decals.



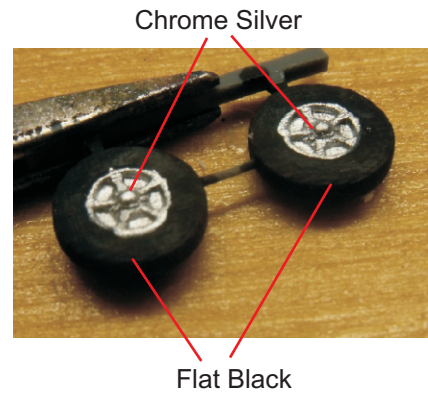
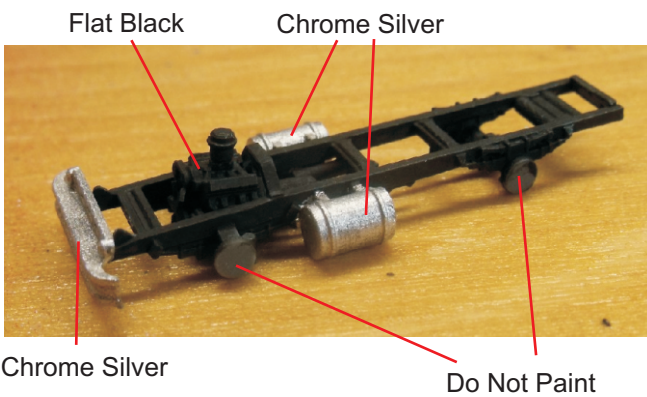
Painting Guide For The Cab

The cab interior was brush painted with Tamiya XF-1 (black) and XF-78 (tan). I sprayed the cab gloss red using a Rust-oleum paint+primer spray can. Then I applied paint to the signal lights & headlights using a toothpick (Tamiya X-11).

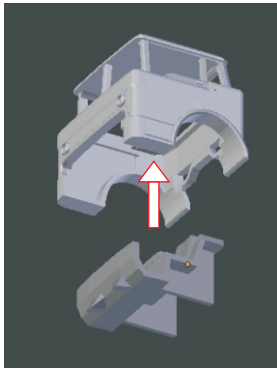


Painting Guide For The Chassis & Wheels

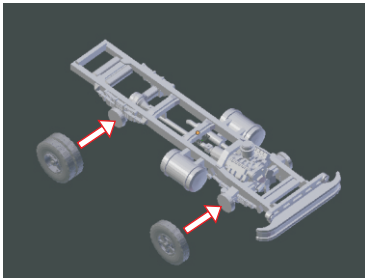
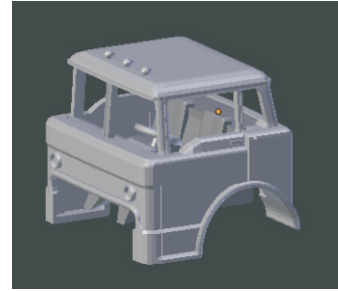
The chassis is painted flat black except for the front bumper/grill, wheel hubs, fuel tanks (which are all painted with Tamiya X11).



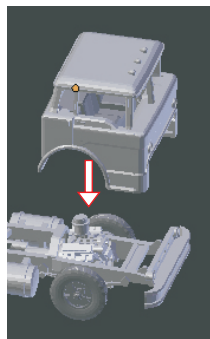
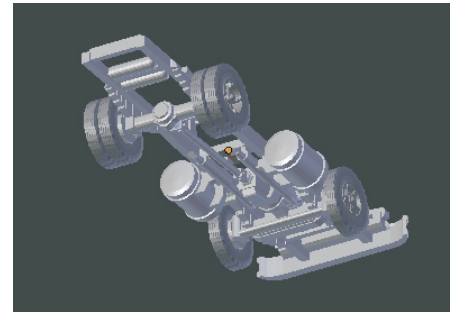
Final Assembly For Propane Truck



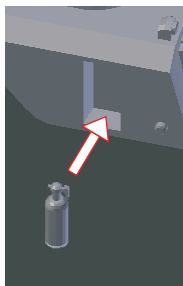
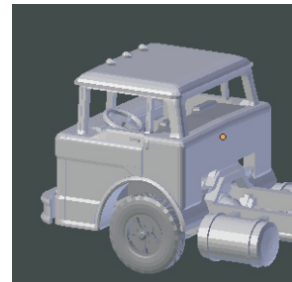
Step 1 - Attach the cab interior to the cab



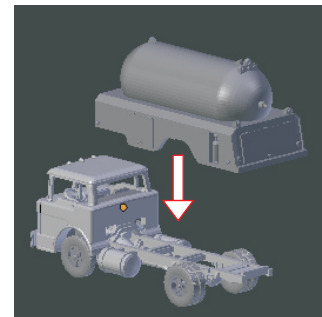
Step 2 - Attach the wheels to the chassis (on both sides)



Step 3 - Attach the cab to the chassis



Steps 4 & 5 - Attach fire extinguisher to the tanker bed and attach the bed to the chassis



Assembly Completed

