

# Assembly Instructions For Z-Scale Ford C Series Truck Kit



[www.eaelec.com](http://www.eaelec.com)

Made in Canada

This kit is a scale model of a Ford C600 medium duty truck. The C series was a cab-over-engine design introduced in 1957. The kit contains all the parts needed to build a propane tanker.

3D printed parts Included in the kit:

- A. 1 chassis
- B. 1 cab
- C. 1 propane tanker bed

Also included: 1 decal sheet.

Required to complete the kit:

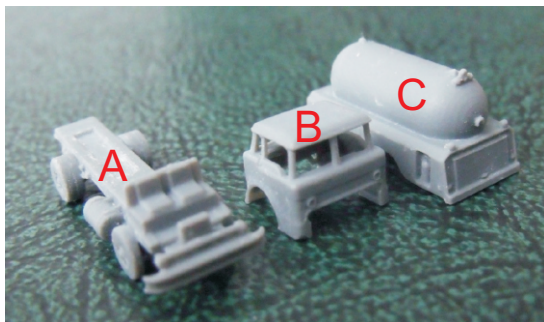
Paint - see painting guide on page 2.

Glue - Slow setting CA is best.

Tools -

- 1. X-acto knife with a sharp #11 blade.
- 2. #400 and #600 sandpaper.

## Parts For Propane Truck



Decal Sheet

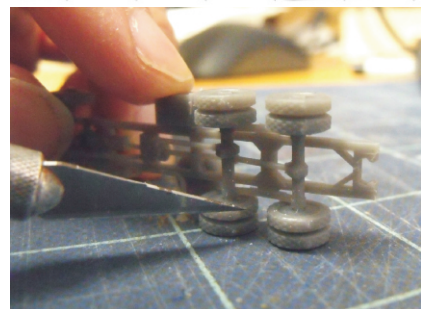
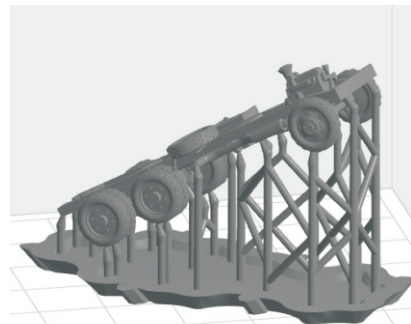


**WARNING: CHOKING HAZARD**  
Keep out of reach of small children!

**NOTE: THESE ARE NOT TOYS, AND ARE NOT INTENDED FOR USE BY CHILDREN UNDER AGE OF 14.** These products are model railroad equipment and accessories intended for use by adults.

The 3D printing process requires a supporting frame during printing, see below. The printed part is cut from the frame using flush cutters and this sometimes leaves small bumps on the part. Use a knife with a sharp new blade to cut away the bumps. When trimming bumps off the wheels you should place the wheel on a flat surface as shown below. Putting too much stress on the wheel can cause the axle to break. For bumps on the cab body, sanding is recommended.

After cleaning up the bumps, paint the parts and apply the decals as shown on the painting guide on page 2. When everything is dry, proceed to final assembly, using CA glue.



## Preparing the Decals

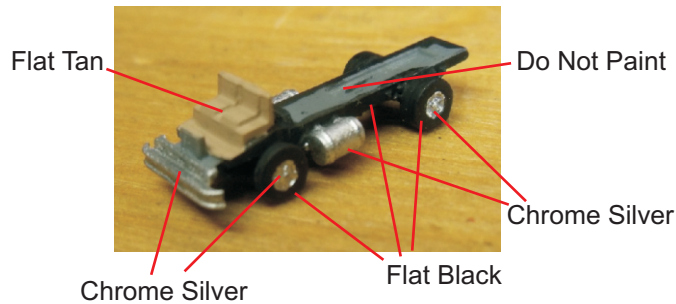
**Important** -The decals must be cut apart (as shown on the right) just inside the dotted lines before immersing them in water.



## Painting Guide For Propane Truck

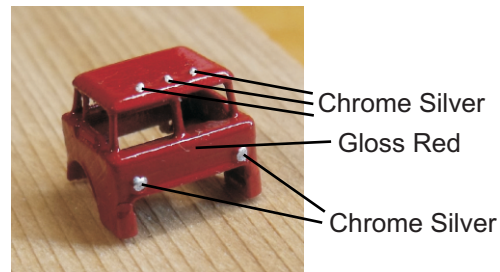
### Chassis

The chassis is painted flat black except for the front bumper/grill, wheel hubs, fuel tanks (which are all painted with Tamiya X11) and the seats which are tan (Tamiya XF-78).



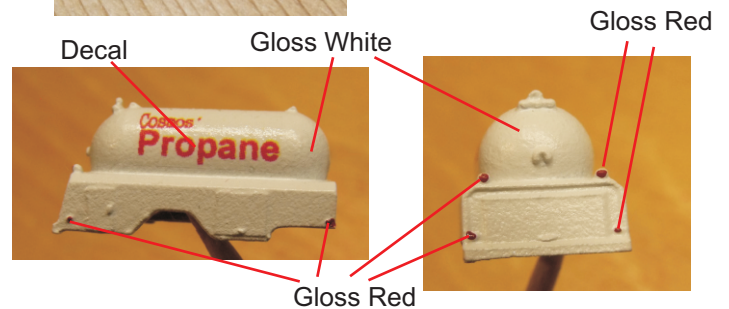
### Cab

For this cab I used a paint+primer spray can to spray the body gloss red. I used a toothpick to apply paint to the headlights and signal lights (Tamiya X11).

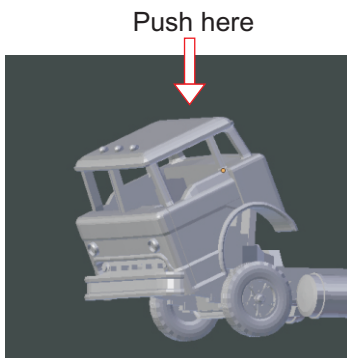


### Propane Bed

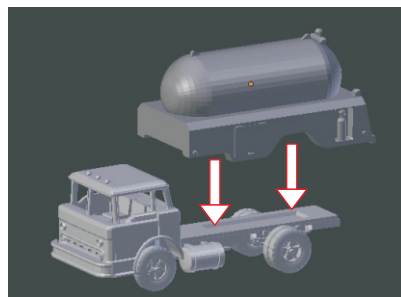
I sprayed the bed flat white, then sprayed it with gloss coat before applying the decals. I apply paint to the signal lights using a toothpick. After the decals have dried, I sprayed with glosscoat again to preserve the decals.



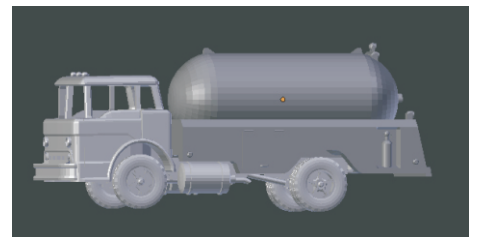
## Final Assembly For Propane Truck



Step 1 - Insert the bottom front of the cab behind the bumper as shown above, then push gently on the rear part of the cab roof until the cab snaps into place.



Step 2 - Attach the propane bed to the chassis



Propane truck assembly complete