

Assembly Instructions For TT-Scale Ford F6 Cube Truck



WARNING: CHOKING HAZARD
Keep out of reach of small children!

Note that these ARE NOT TOYS, AND ARE NOT INTENDED FOR USE BY CHILDREN UNDER AGE OF 14. These products are model railroad equipment and accessories intended for use by adults.

www.eaelec.com

Made in Canada

This is a scale model kit of the 1951 F6 series medium duty truck. It is equipped with the "flathead" V-8 engine and a cube bed for appliance delivery.

3D printed parts Included in the kit:

- A. chassis.
- B. cab
- C. cube bed

Also included:

- D. waterslide decal sheet.

Required to complete the kit:

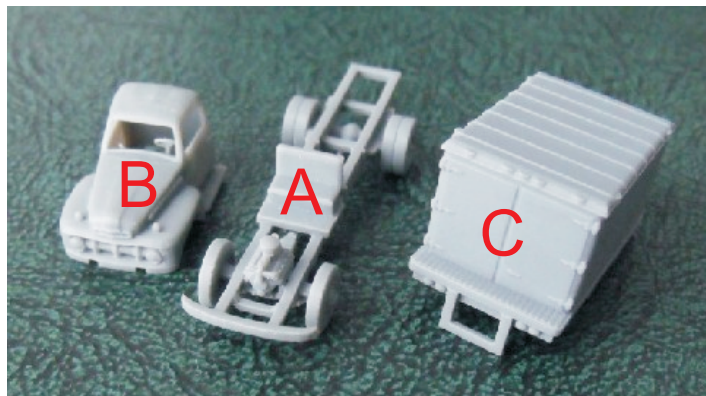
Paint - see painting guide on pages 2 & 3.

Glue - Slow setting CA is best.

Tools -

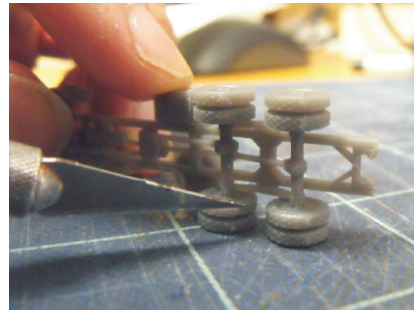
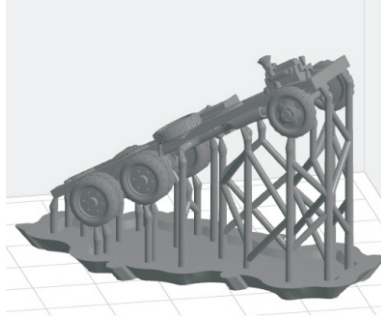
1. X-acto knife with a sharp #11 blade.
2. #400 and #600 sandpaper.
3. Scissors

Parts In The Kit



D

The 3D printing process requires a supporting frame during printing, see below left. The printed part is cut from the frame using flush cutters and this sometimes leaves small bumps on the part. Use a knife with a sharp new blade to cut away the bumps. When trimming bumps off the wheels you should place the wheel on a flat surface as shown below on the right. Putting too much stress on the wheel can cause the axle to break. For bumps on the cab body, sanding is recommended.




After cleaning up the bumps, paint the parts and apply the decals as shown on the painting guide on pages 2 & 3.

When everything is dry, proceed to final assembly on page 4.

Preparing the Decals

Important -The decals must be cut apart (as shown below), just inside the dotted lines, before immersing them in water.

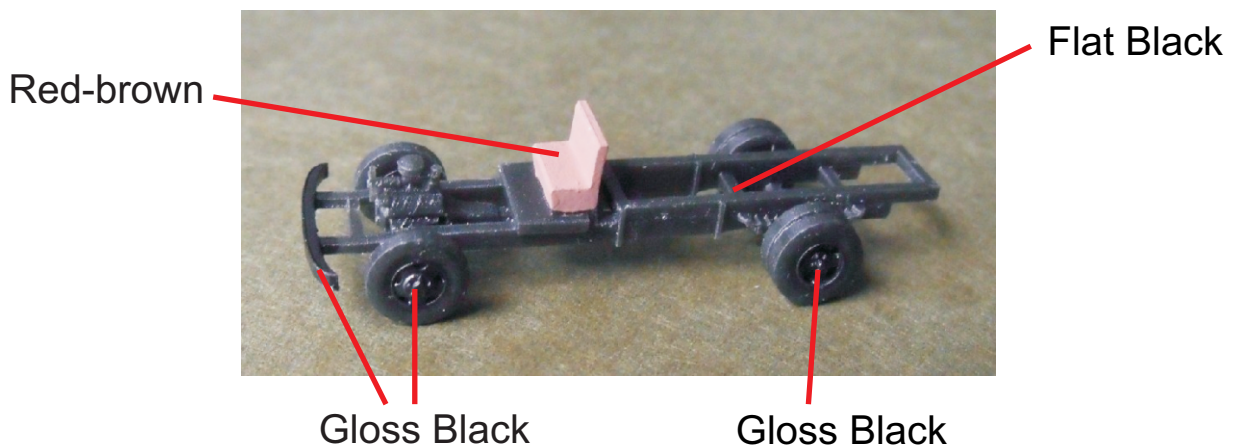


Cut Out Decals




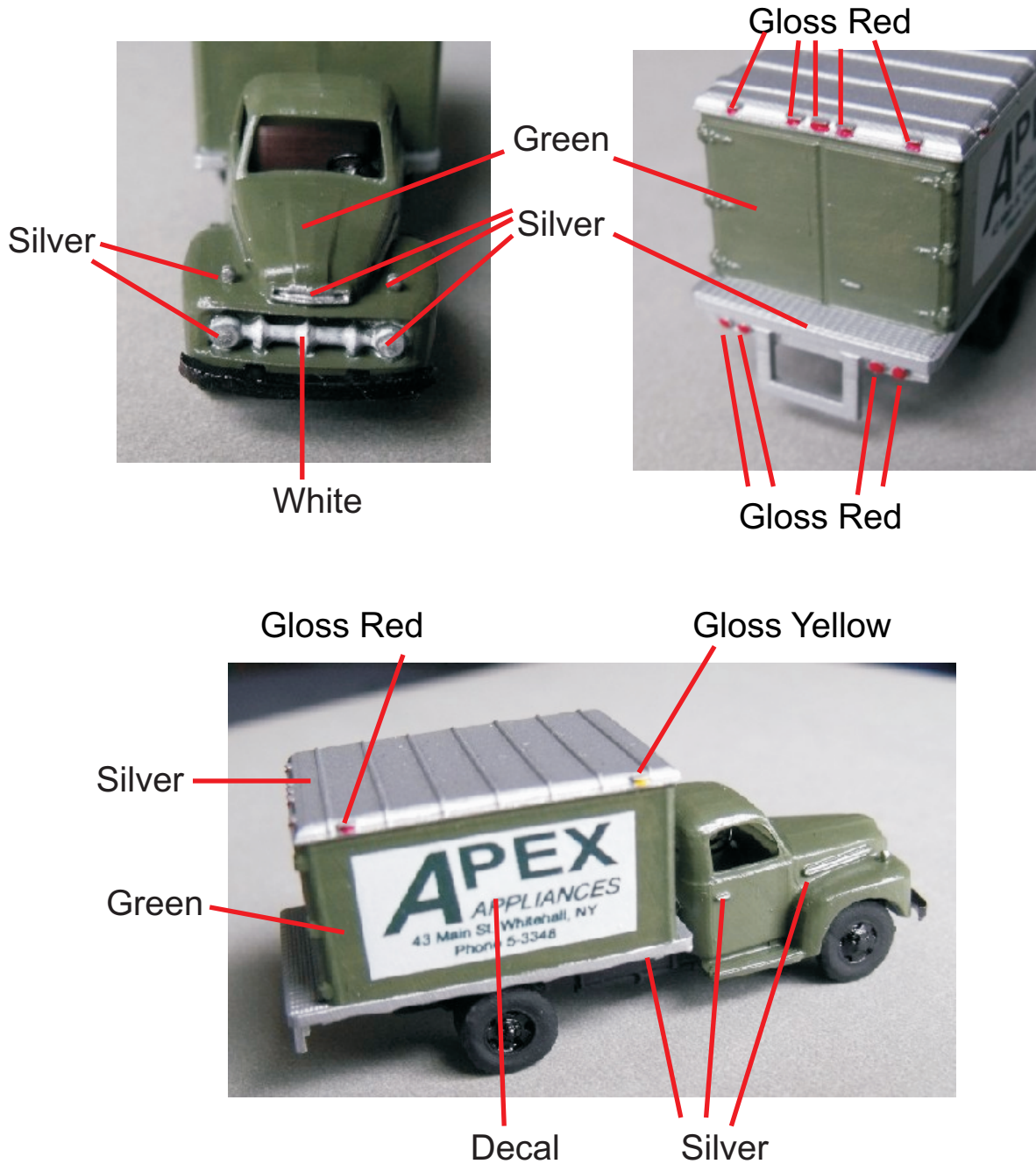
Painting guide - Chassis

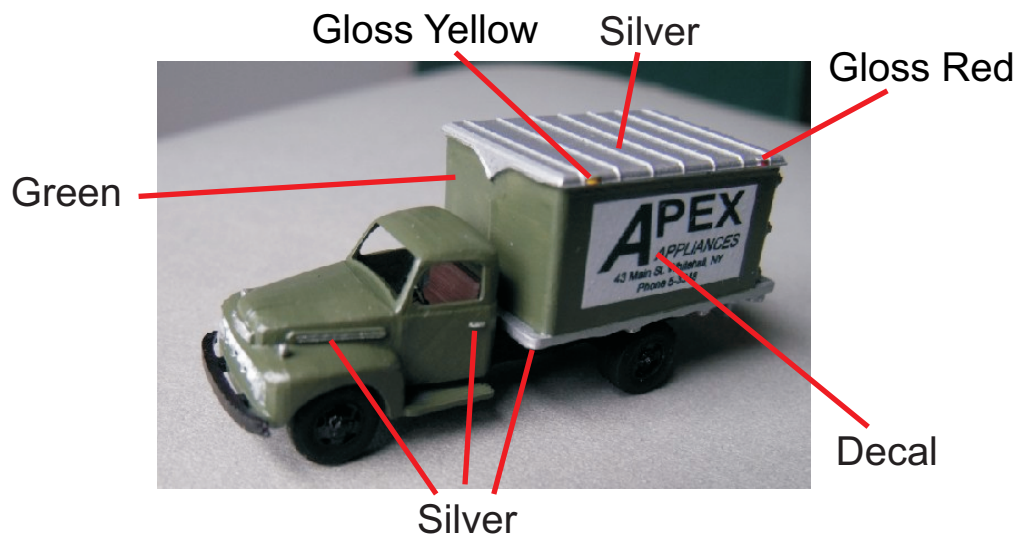
Paint the chassis is flat black except for the front bumper and wheel hubs which are gloss black. The seat on these trucks was covered with reddish brown leather.



Painting guide - Cab and Tanker Bed

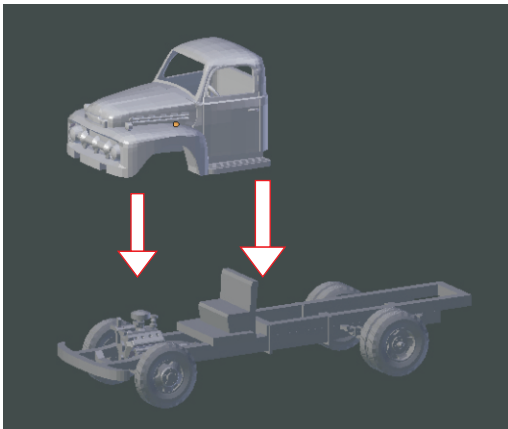
I first paint the cube bed metallic silver, using Testors 1246 spray can. After the silver has dried, I brush painted the cab and the side, front and rear of the cube bed with flat green. Then I spray both the cab and bed with glosscoat. The interior of the cab is the same color as the exterior, except for the steering wheel, which is gloss black. Then I paint the lights and trim. I use a toothpick to apply paint to the lights, a very fine brush for trim. Then the decals are applied. After the decals are dry, I spray with gloss coat to preserve them.





Final Assembly

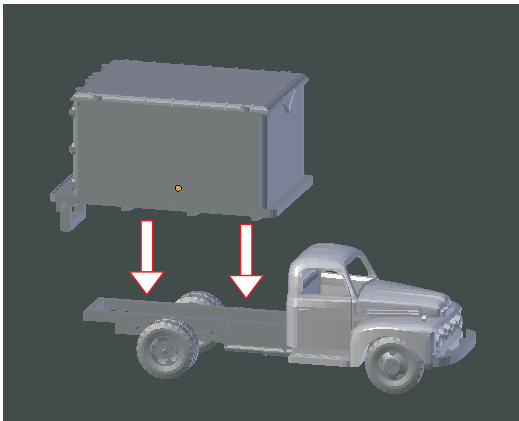
After painting and decals are completed, assemble the truck as shown below using CA glue.



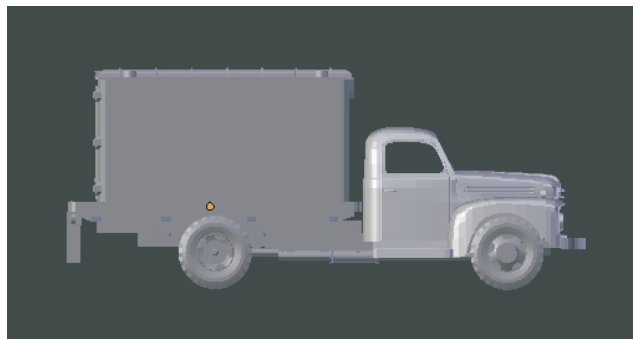
Step 1 - attach the cab to chassis



Cab in place



Step 3 - attach the cube bed to the chassis



Appliance Delivery Truck
Assembly Completed