

Assembly Instructions For Z-Scale Ford F6 Truck Kit



www.eaelec.com
Made in Canada

These are scale models of the 1951 F6 series medium duty trucks. The kit contains all the parts needed to build 2 complete trucks: a garbage compactor and a dump truck.

3D printed parts Included in the kit:

- A. 2 chassis
- B. 2 cabs
- C. 1 compactor bed
- D. 1 dump bed.

Also included:

- E. 2 decal sheets.

Required to complete the kit:

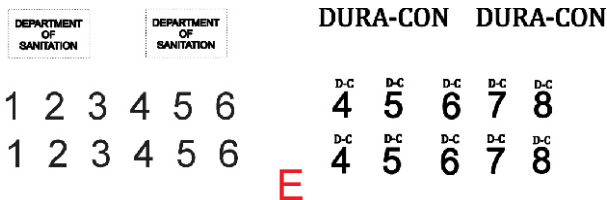
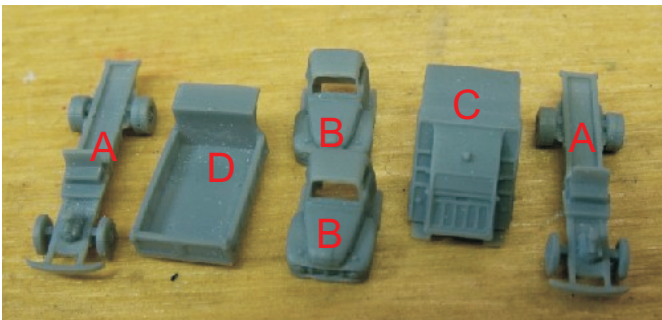
Paint - see painting guide on page 2.

Glue - Slow setting CA is best.

Tools -

1. X-acto knife with a sharp #11 blade.
2. #400 and #600 sandpaper.

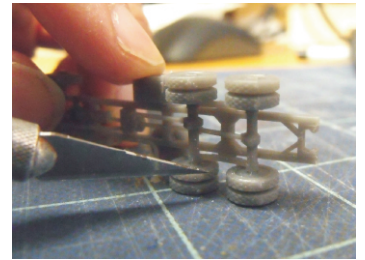
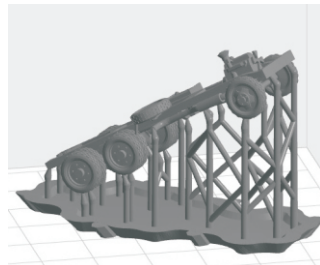
Parts In The Kit



WARNING: CHOKING HAZARD Keep out of reach of small children!

Note that these ARE NOT TOYS, AND ARE NOT INTENDED FOR USE BY CHILDREN UNDER AGE OF 14. These products are model railroad equipment and accessories intended for use by adults.

The 3D printing process requires a supporting frame during printing, see below left. The printed part is cut from the frame using flush cutters and this sometimes leaves small bumps on the part. Use a knife with a sharp new blade to cut away the bumps. When trimming bumps off the wheels you should place the wheel on a flat surface as shown below on the right. Putting too much stress on the wheel can cause the axle to break. For bumps on the cab body, sanding is recommended.

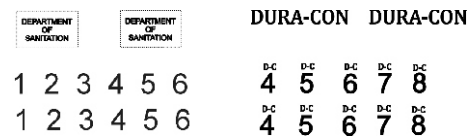


After cleaning up the bumps, paint the parts and apply the decals as shown on the painting guide on page 2.

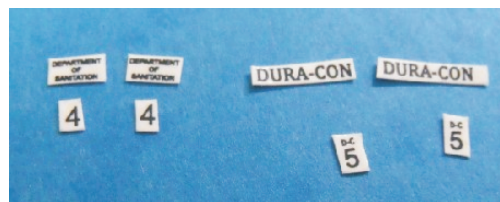
When everything is dry, proceed to final assembly.

Preparing the Decals

Important -The decals must be cut apart (as shown below) before immersing them in water. Cut out the "Department of Sanitation" decals just inside the dotted lines. Cut out the other decals as close to the text as possible. Note there are multiple cab numbers in case you have more than one truck of the same type.

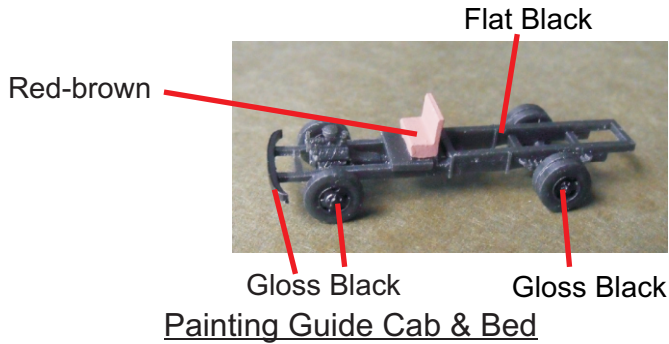


Cut Out Decals

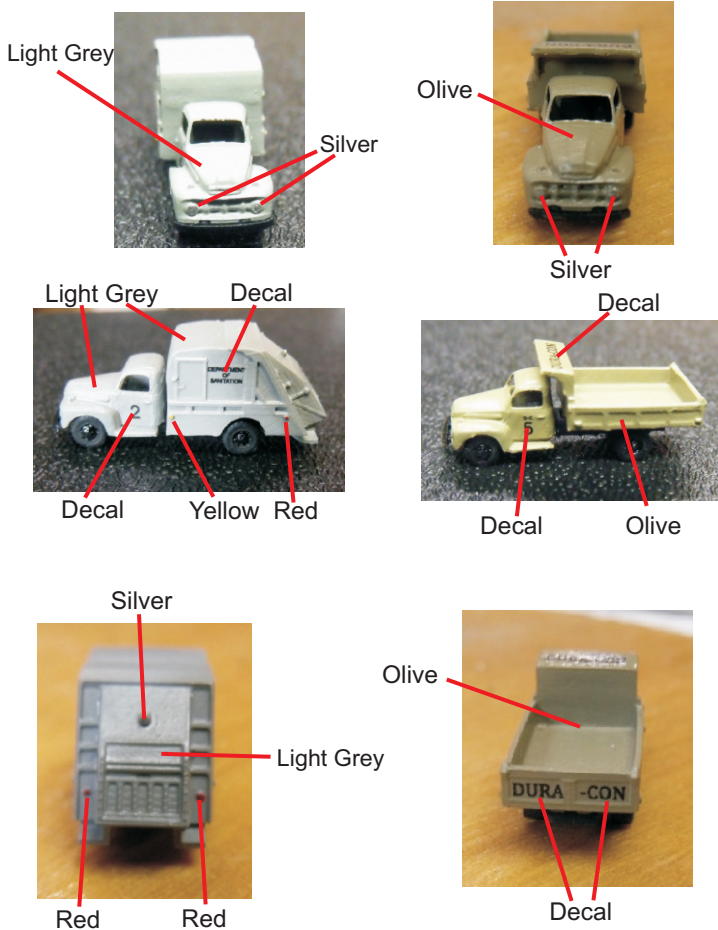


Painting guide - Chassis

The chassis is painted flat black, except the front bumper and wheel hubs (which are gloss black) and the seat. The seat on these trucks was covered with reddish brown leather. The dump chassis is slightly different than the garbage truck chassis; see picture on the right.

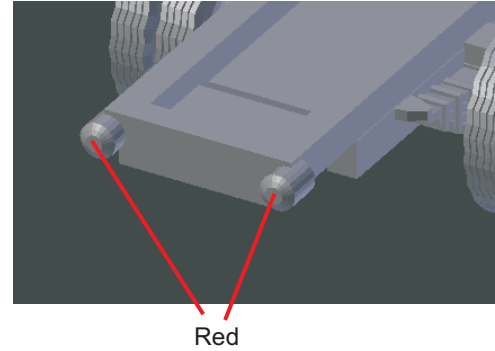


The method I use for painting Z-scale trucks is to airbrush the body color with flat paint. Then I apply paint to the headlights and signal lights using a toothpick. Next, I spray with glosscoat before applying decals. Decals should not be applied to a flat finish. After the decals have dried, spray with glosscoat again to preserve them.



How to tell the Dump Chassis from the Garabge Truck Chassis

The dump chassis is slightly longer than the garbage chassis and has tail lights mounted at the rear. Paint the lens of the tail lights gloss red.



Final Assembly

After painting and decals are completed, assemble the trucks as shown below using CA glue.

