

Assembly Instructions For TT-Scale Ford F6 Tanker Truck



Made in Canada

This is a scale model kit of the 1951 F6 series medium duty truck. It is equipped with the "flathead" V-8 engine and a tanker bed for fuel oil delivery.

3D printed parts Included in the kit:

- A. chassis.
- B. cab
- C. tanker bed
- D. fire extinguisher

Also included:

- E. waterslide decal sheet.

Required to complete the kit:

Paint - see painting guide on pages 2 & 3.

Glue - Slow setting CA is best.

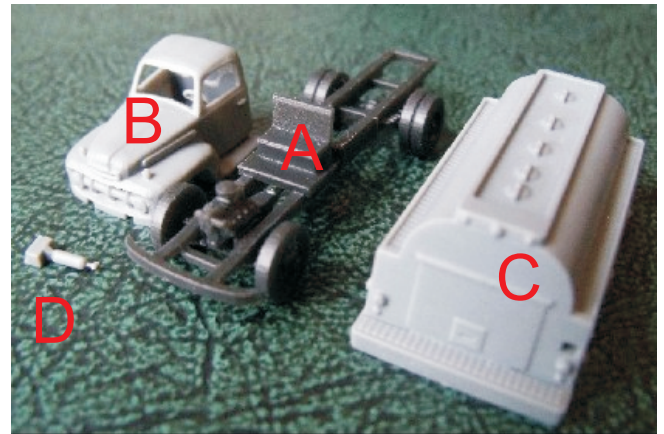
Tools -

1. X-acto knife with a sharp #11 blade.
2. #400 and #600 sandpaper.

WARNING: CHOKING HAZARD
Keep out of reach of small children!

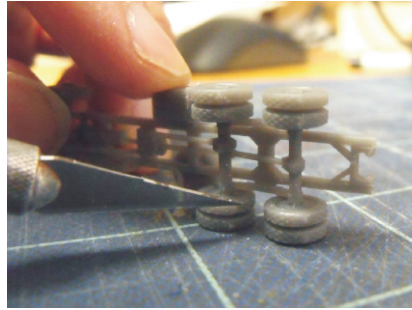
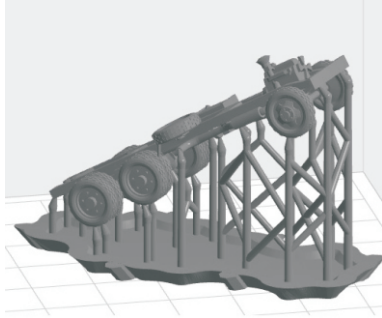
Note that these ARE NOT TOYS, AND ARE NOT INTENDED FOR USE BY CHILDREN UNDER AGE OF 14. These products are model railroad equipment and accessories intended for use by adults.

Parts In The Kit



E

The 3D printing process requires a supporting frame during printing, see below left. The printed part is cut from the frame using flush cutters and this sometimes leaves small bumps on the part. Use a knife with a sharp new blade to cut away the bumps. When trimming bumps off the wheels you should place the wheel on a flat surface as shown below on the right. Putting too much stress on the wheel can cause the axle to break. For bumps on the cab body, sanding is recommended.



After cleaning up the bumps, paint the parts and apply the decals as shown on the painting guide on pages 2 & 3.

When everything is dry, proceed to final assembly on page 4.

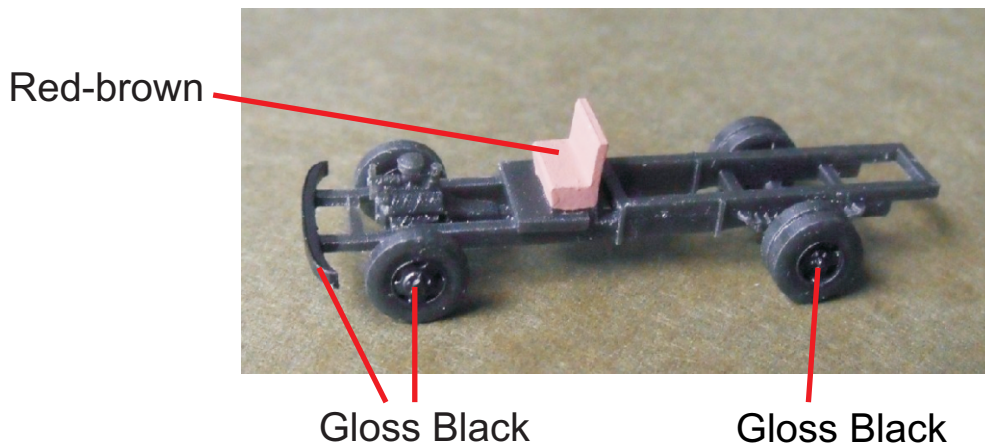
Preparing the Decals

Important -The decals must be cut apart (as shown below), just inside the dotted lines, before immersing them in water.



Painting guide - Chassis

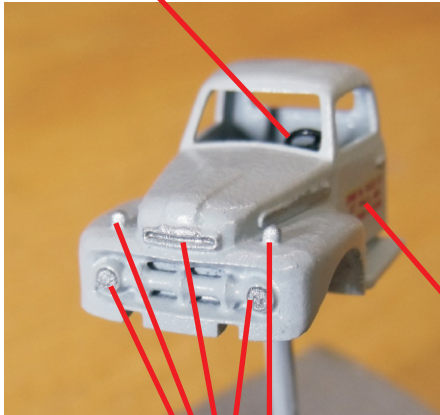
The seat on these trucks was covered with reddish brown leather. The resin used to print the chassis is flat black so paint the front bumper and wheel hubs gloss black.



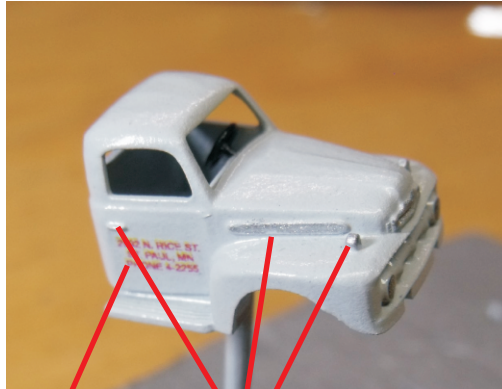
Painting guide - Cab and Tanker Bed

I first paint the cab and the bed using a Krylon brand spray can, the color is called pewter grey (gloss). The interior of the cab is the same color as the exterior, except for the steering wheel, which is gloss black. Once the Krylon is fully dry I paint the lights, trim and the fire extinguisher with acrylic. I use a toothpick to apply paint to the lights, a very fine brush for trim. Then the decals are applied. After the decals are dry, I spray with gloss coat to preserve them.

Gloss Black



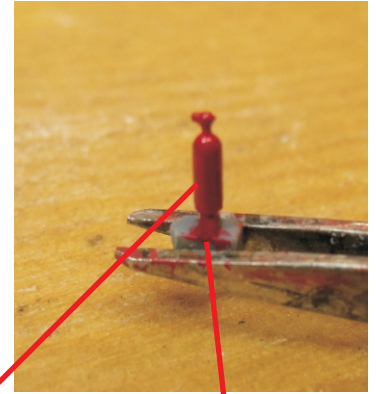
Silver



Decals

Silver

Gloss Red

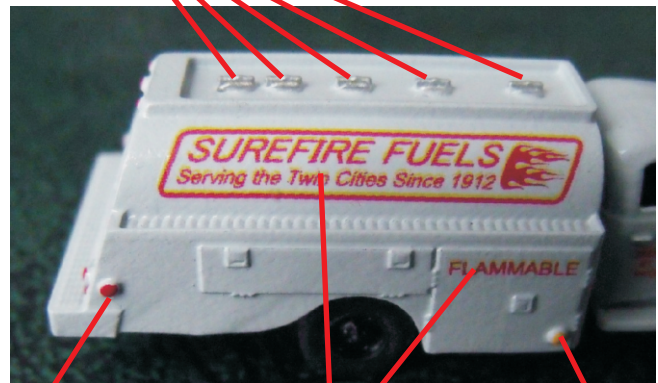


Cut off support base when dry



Gloss Yellow

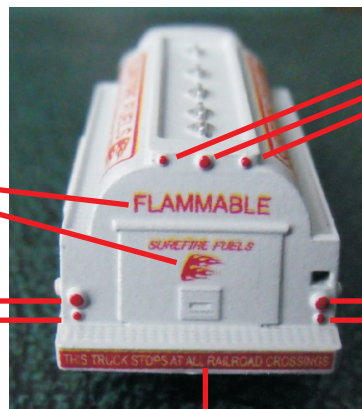
Decals



Gloss Red

Decals

Gloss Yellow



Gloss Red

Decals

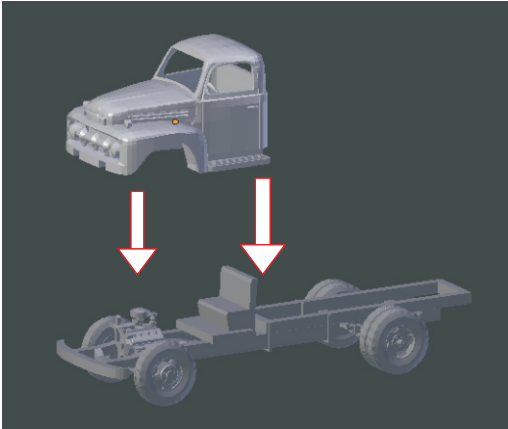
Gloss Red

Gloss Red

Decal

Final Assembly

After painting and decals are completed, assemble the truck as shown below using CA glue.



Step 1 - attach the cab to chassis



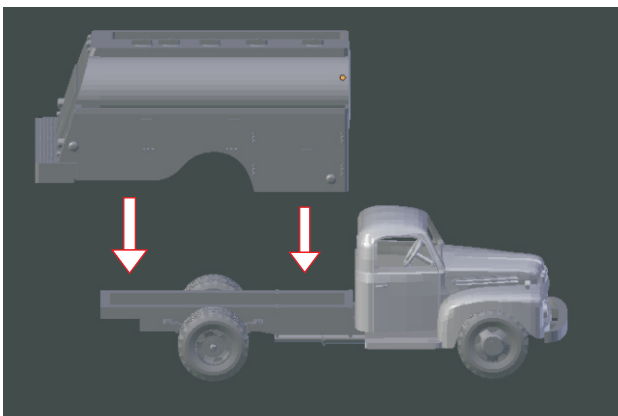
Cab in place



Step 2 - attach the fire extinguisher to the tanker bed



Fire extinguisher in place



Step 3 - attach the tanker bed to the chassis



Assembly completed