

Assembly Instructions For Z-Scale Ford F6 Truck Kit

WARNING: CHOKING HAZARD
Keep out of reach of small children!

Note that these ARE NOT TOYS, AND ARE NOT INTENDED FOR USE BY CHILDREN UNDER AGE OF 14. These products are model railroad equipment and accessories intended for use by adults.



www.eaelec.com

Made in Canada

These are scale models of the 1951 F6 series medium duty trucks. The kit contains all the parts needed to build 2 complete trucks: a tanker for fuel oil delivery and a cube truck for appliance delivery.

3D printed parts Included in the kit:

- A. 2 chassis
- B. 2 cabs
- C. 1 tanker bed
- D. 1 cube bed.

Also included:

- E. 2 decal sheets.

Required to complete the kit:

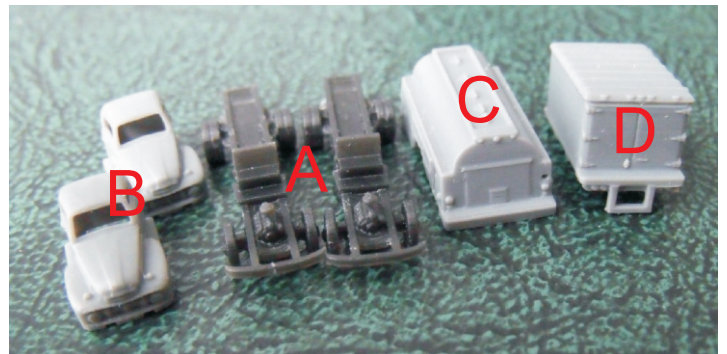
Paint - see painting guide on pages 2 & 3.

Glue - Slow setting CA is best.

Tools -

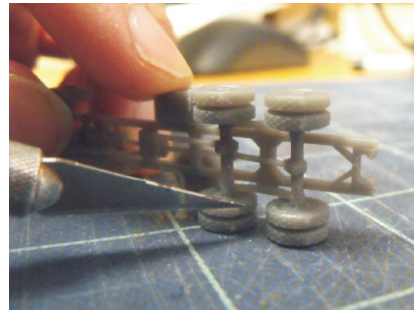
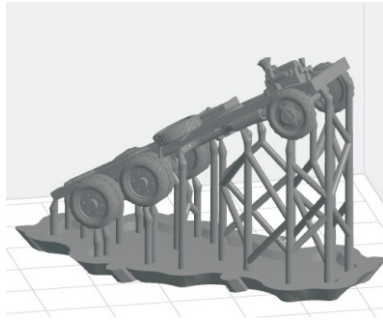
1. X-acto knife with a sharp #11 blade.
2. #400 and #600 sandpaper.

Parts In The Kit



E

The 3D printing process requires a supporting frame during printing, see below left. The printed part is cut from the frame using flush cutters and this sometimes leaves small bumps on the part. Use a knife with a sharp new blade to cut away the bumps. When trimming bumps off the wheels you should place the wheel on a flat surface as shown below on the right. Putting too much stress on the wheel can cause the axle to break. For bumps on the cab body, sanding is recommended.



After cleaning up the bumps, paint the parts and apply the decals as shown on the painting guide on pages 2 & 3.

When everything is dry, proceed to final assembly on page 4.

Preparing the Decals

Important -The decals must be cut apart (as shown below) just inside the dotted lines before immersing them in water.

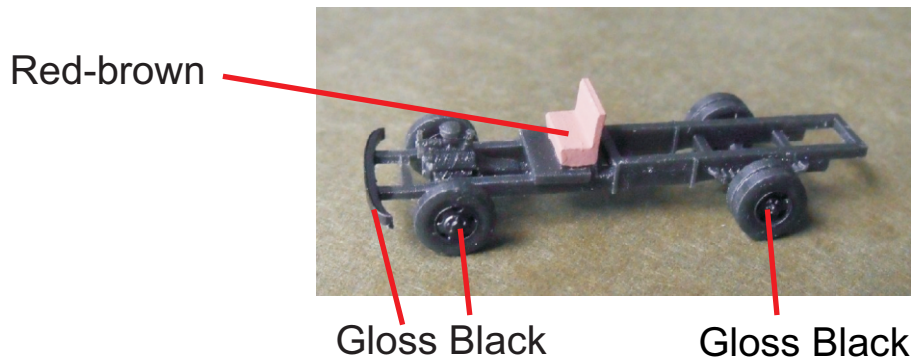


Cut Out Decals



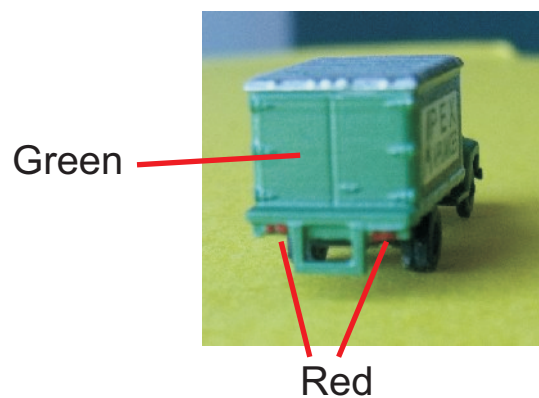
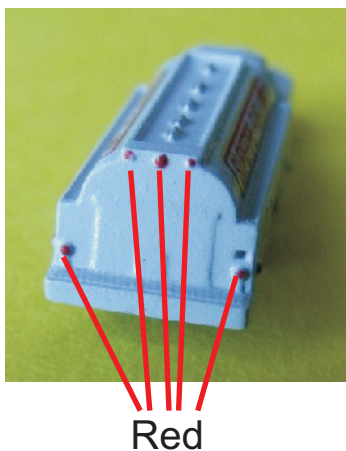
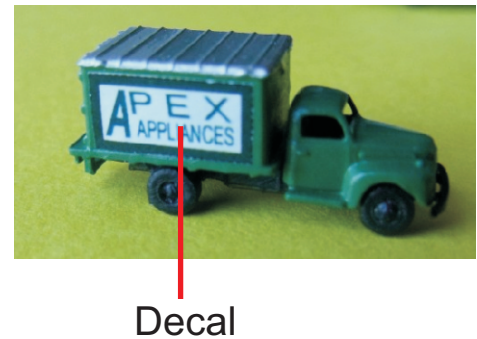
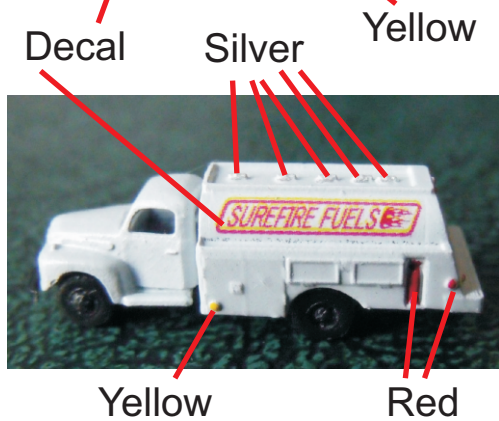
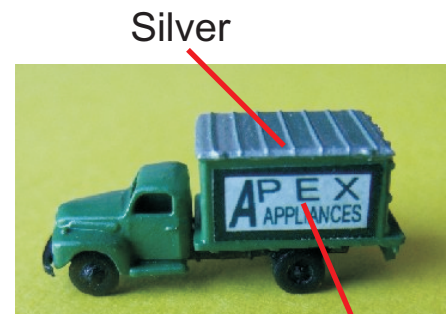
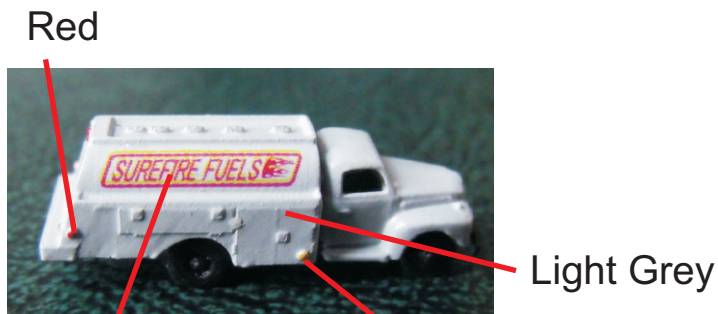
Painting guide - Chassis

The seat on these trucks was covered with reddish brown leather. The resin used to print the chassis is flat black so paint the front bumper and wheel hubs gloss black.



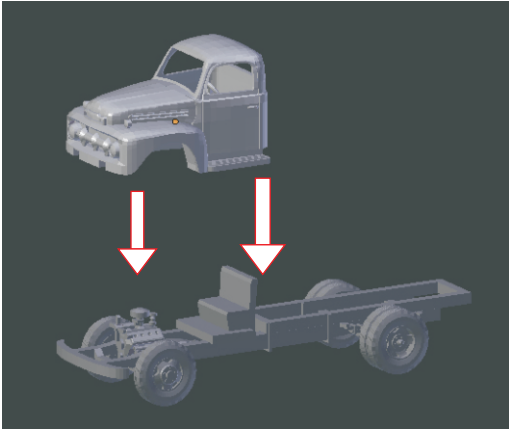
Painting Guide Cab & Bed

The method I use for painting Z-scale trucks is to airbrush the body color with flat paint and then spray over with glosscoat. Then the the fire extinguisher and fuel caps are painted with a very fine brush. I apply paint to the headlights and signal lights using a toothpick. After the decals have dried spray with glosscoat to preserve them.



Final Assembly

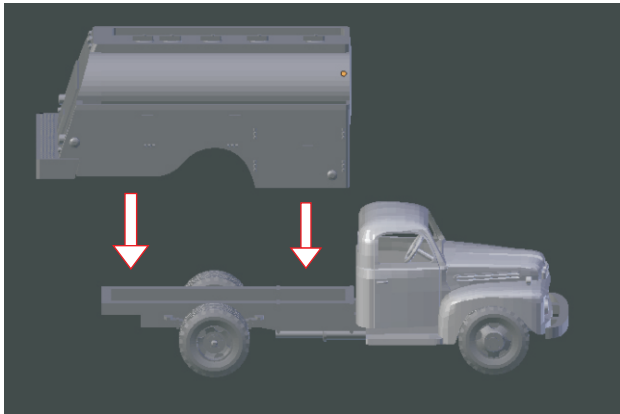
After painting and decals are completed, assemble the truck as shown below using CA glue.



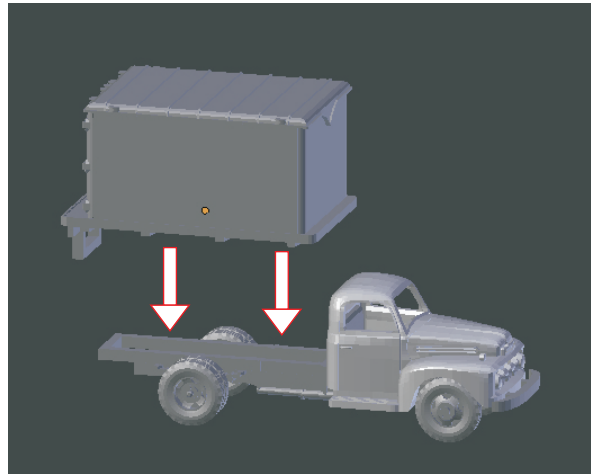
Step 1 - attach both cabs to chassis



Cab in place



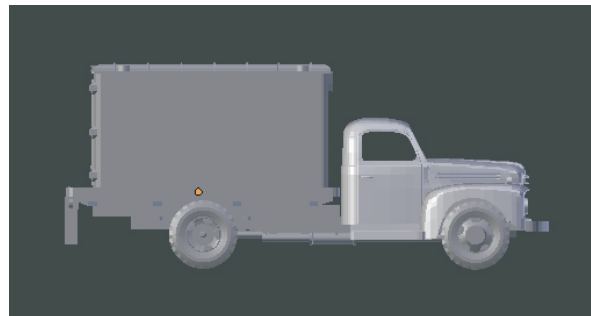
Step 2 - attach the tanker bed to the chassis



Step 3 - attach the cube bed to the chassis



Tanker
Assembly Completed



Appliance Delivery Truck
Assembly Completed