

# Assembly Instructions For N-Scale White M3 Half-track



[www.eaelec.com](http://www.eaelec.com)

Made in Canada  
Decals Printed in the USA

The White M3 half-track was an armored personnel carrier widely used by US and it's Allies during WW2. Derived from the M2 half-track car, the M3 was extensively produced, with about 15,000 standard M3s and more than 38,000 variant units manufactured.

Parts Included in the kit:

- A. 3D printed chassis
- B. 3D printed body
- C. 1 decal sheet

Required to complete the kit:

Paint - Flat black, gunmetal (Tamiya X10), glosscoat, dullcoat and flat army olive (Tamiya XF49).  
Glue - Slow setting CA is best.

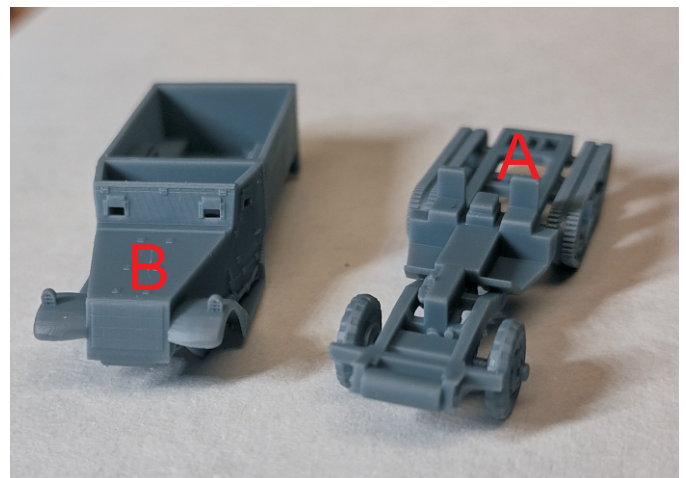
Tools Required:

- 1. X-acto knife with a sharp #11 blade.
- 2. #400 and #600 sandpaper.

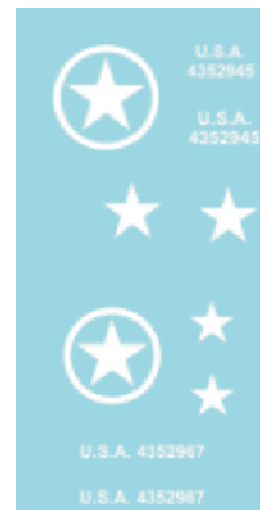
**WARNING: CHOKING HAZARD**  
Keep out of reach of small children!

Note that these ARE NOT TOYS, AND ARE NOT INTENDED FOR USE BY CHILDREN UNDER AGE OF 14. These products are model railroad equipment and accessories intended for use by adults.

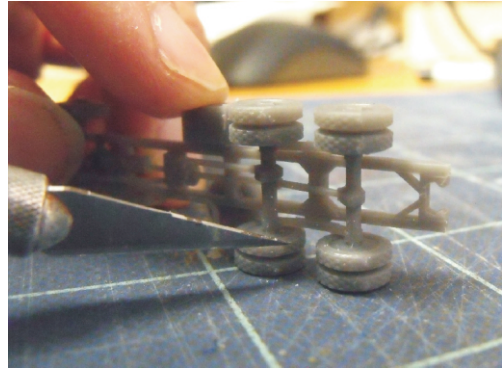
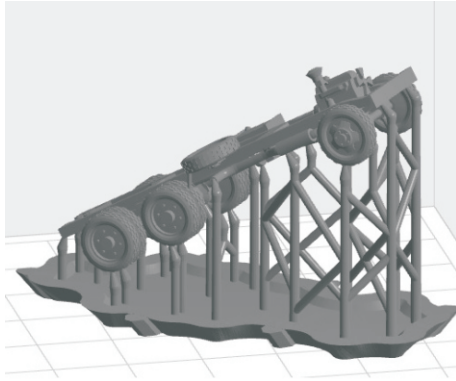
## 3D Printed Parts in the Kit



## Decal Sheet



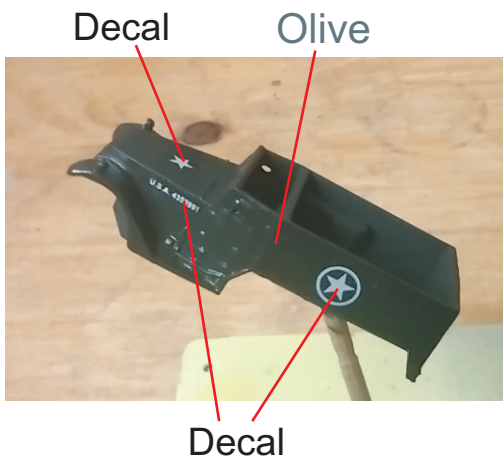
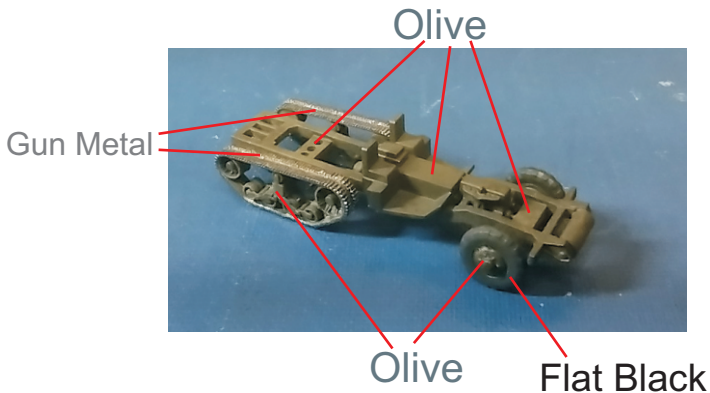
The 3D printing process requires a supporting frame during printing, see below left. The printed part is cut from the frame using flush cutters and this sometimes leaves small bumps on the part. Use a knife with a sharp new blade to cut away the bumps. When trimming bumps off the wheels you should place the wheel on a flat surface as shown below on the right. Putting too much stress on the wheel can cause the axle to break. For bumps on the body, sanding is recommended.



After cleaning up the bumps, paint the body and chassis as shown in the painting guide below. Apply a coat of gloss to the body, let dry and then place the decals as shown. After the decals are completely dry, apply dullcoat to the body. Note: not all decals on the sheet are needed..

When everything is dry, glue body to the chassis using CA glue as shown in final assembly below.

### Painting & Decal Placement



### Final Assembly

