

# Assembly Instructions For Z-Scale Dodge Power Wagon



[www.eaelec.com](http://www.eaelec.com)  
Made in Canada

The DodgePower Wagon was mechanically derived from the WC series of 3/4 ton military trucks. Introduced in 1946 as the first post-war civilian production 4x4 truck; it featured an enclosed all-weather cab, an 8-foot cargo box, 126 inch wheelbase and a 230 cubic-inch flathead inline-six engine. This kit contains parts for 2 complete trucks.

3D printed parts Included in the kit (2 of each):

- A. chassis
- B. cab/cargo box
- C. spare tire

Required to complete the kit:

Paint - Gloss red, flat black, flat steel, silver & glosscoat

Glue - Slow setting CA is best.

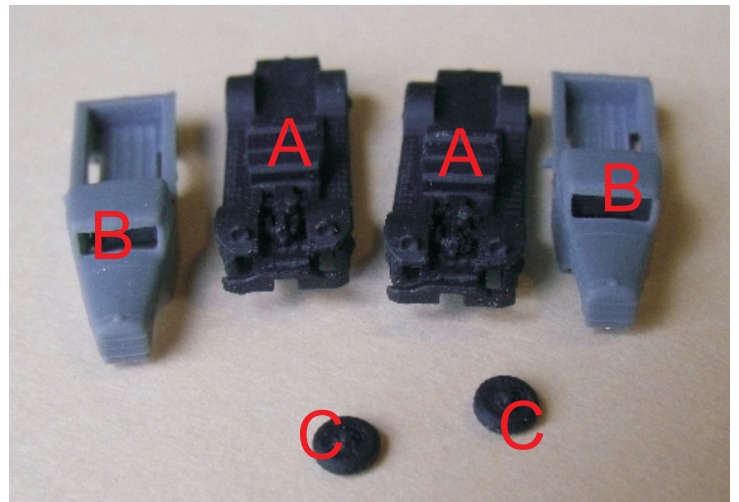
Tools Required:

1. X-acto knife with a sharp #11 blade.
2. #400 and #600 sandpaper.

**WARNING: CHOKING HAZARD** Keep out of reach of small children!

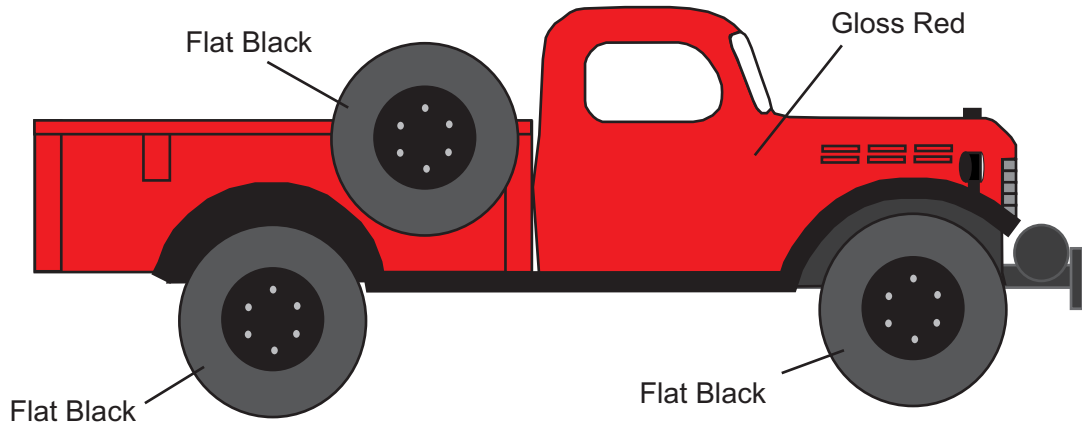
Note that these ARE NOT TOYS, AND ARE NOT INTENDED FOR USE BY CHILDREN UNDER AGE OF 14. These products are model railroad equipment and accessories intended for use by adults.

## Parts in the Kit

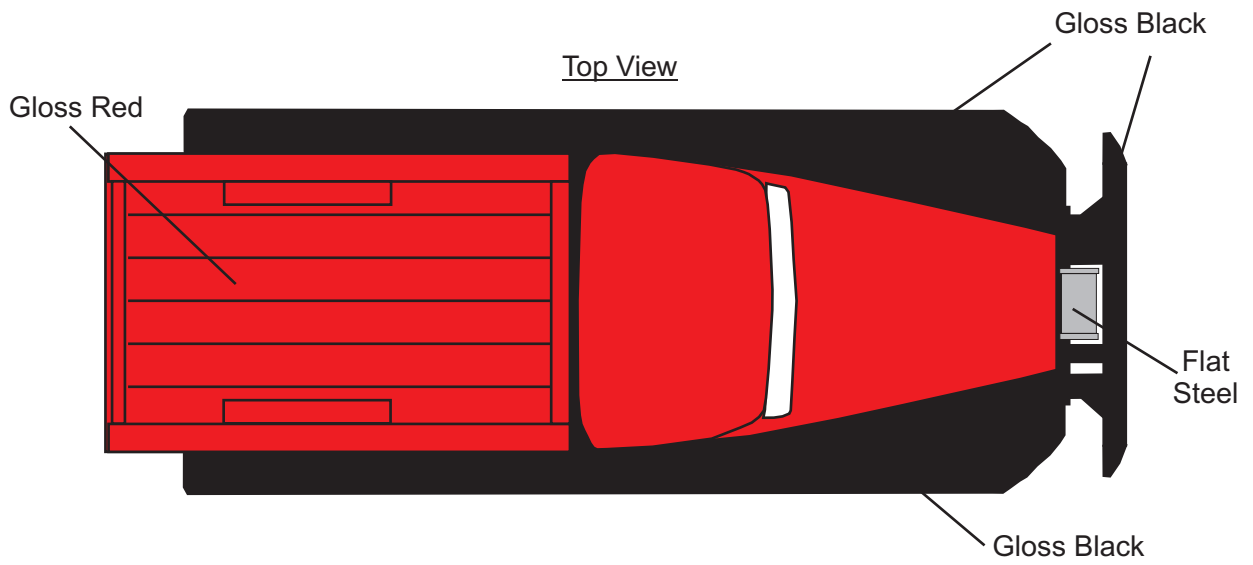


# Dodge Power Wagon, Painting Guide

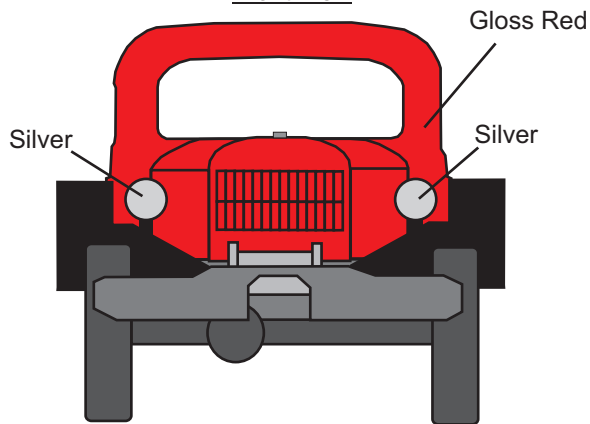
Left View



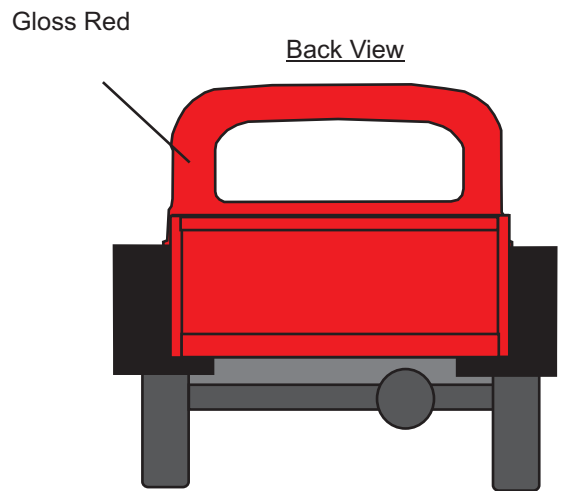
Top View



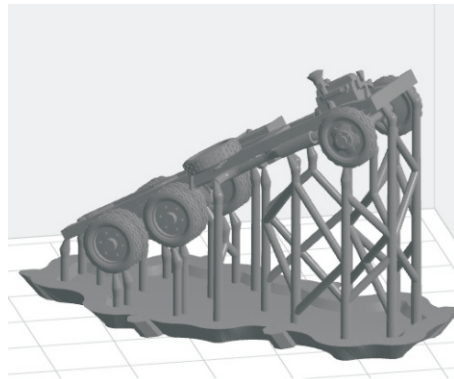
Front View



Back View



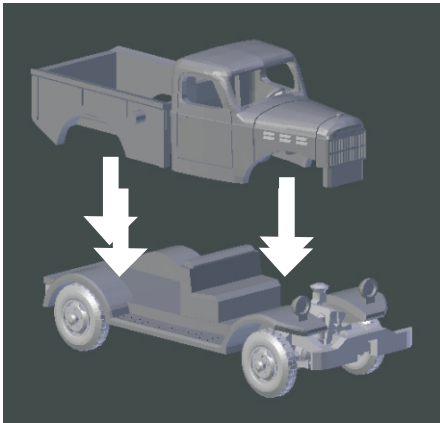
The 3D printing process requires a supporting frame during printing, see below. The printed part is cut from the frame using flush cutters and this sometimes leaves small bumps on the part. Use a knife with a sharp new blade to cut away the bumps. A flat jeweler's file is also use full for removing bumps. For bumps on the cab body, sanding is recommended.



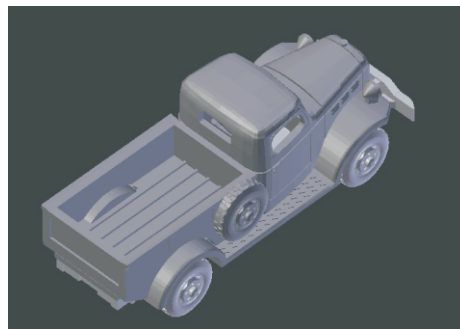
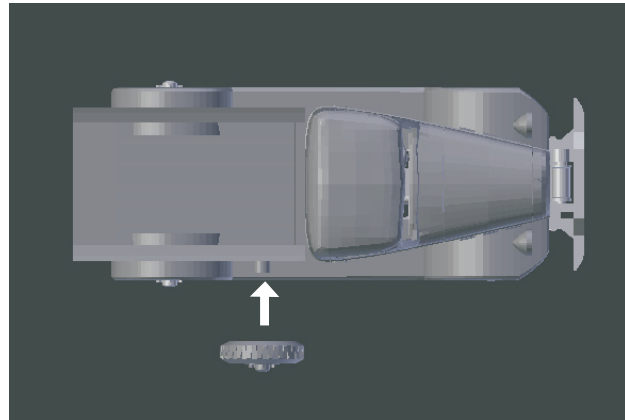
After cleaning up the bumps, paint the cab/cargo bed gloss red and spray the floor/fender section with glosscoat to give it a gloss finish (see painting guide on page 3). When these are completely dry, paint the headlight lens silver. Paint the winch drum flat steel.

When everything is dry, assemble the truck as shown below using CA glue.

Step 1 - Glue cab/bed to floor/fender section



Step 2 - Glue spare tire to cab/bed



Assembly completed