

# Assembly Instructions For Studebaker US6 2 ½ ton Dump Truck



[www.eaelec.com](http://www.eaelec.com)

Made in Canada

Decals printed in USA

Production of the US6 truck started in 1941 and over 200,000 were built during World War 2. Over 150,000 were exported under the lend-lease program mostly to Russia. The US military used these trucks in the construction of the Burma Road and in North America on the Alcan (Alaska) highway.

This kit is the dump truck version of the US6.

3D printed parts included in the kit:

- A. Chassis.
- B. Cab
- C. Dump bed

Also included 1 Decal Sheet

Required to complete the kit:

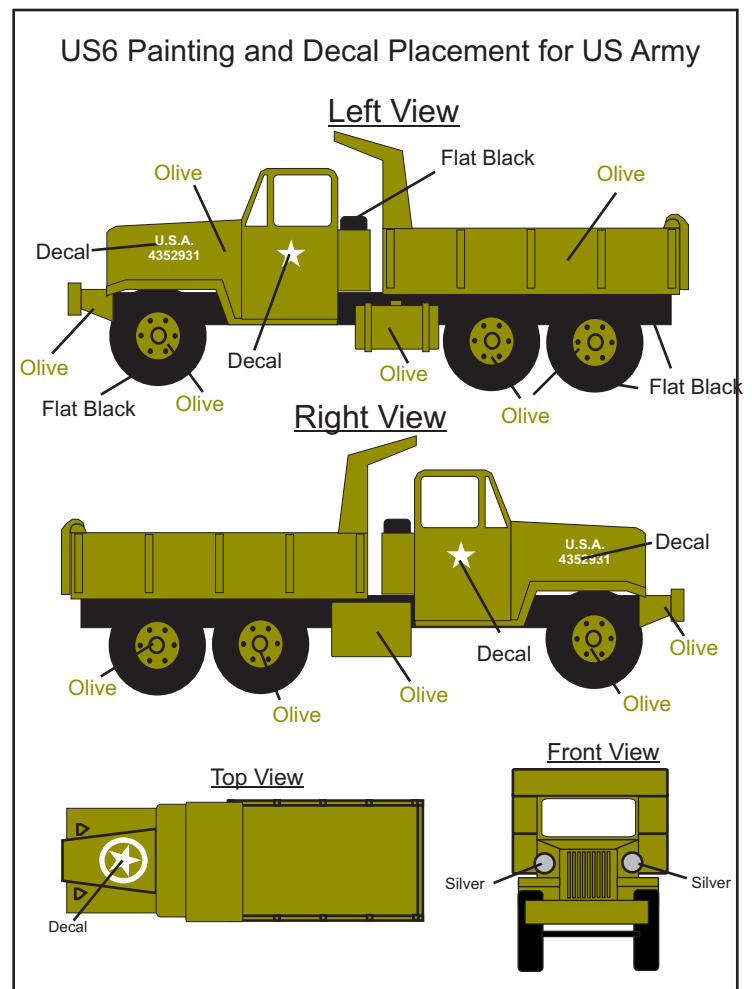
Paint - Flat black, silver, glosscoat, dullcoat  
& flat army olive (Testors 1165 or Tamiya XF49)  
Glue - Slow setting CA is best.

Tools Required:

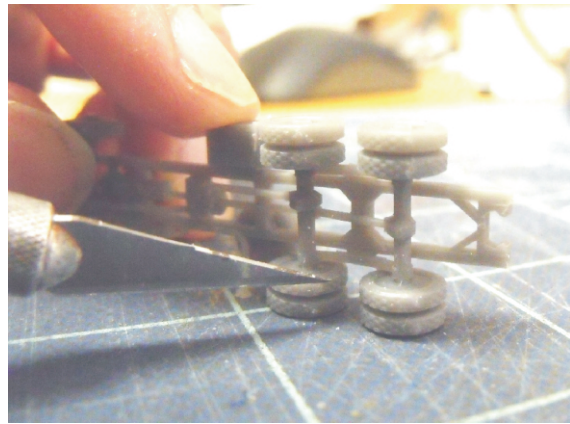
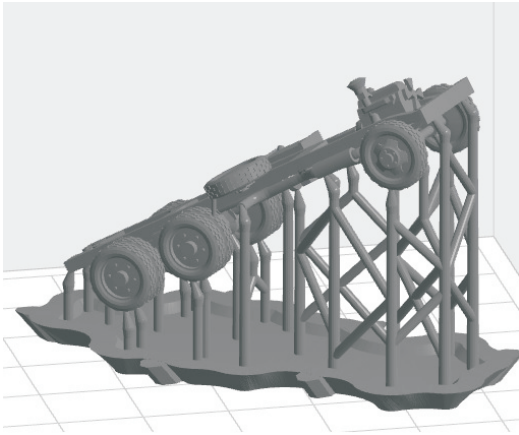
1. X-acto knife with a sharp #11 blade.
2. #400 and #600 sandpaper.

**WARNING: CHOKING HAZARD**  
Keep out of reach of small children!

Note that these ARE NOT TOYS, AND ARE NOT INTENDED FOR USE BY CHILDREN UNDER AGE OF 14. These products are model railroad equipment and accessories intended for use by adults.



The 3D printing process requires a supporting frame during printing, see below left. The printed part is cut from the frame using flush cutters and this sometimes leaves small bumps on the part. Use a knife with a sharp new blade to cut away the bumps. When trimming bumps off the wheels you should place the wheel on a flat surface as shown below on the right. Putting too much stress on the wheel can cause the axle to break. For bumps on the cab body, sanding is recommended.



After cleaning up the bumps, paint the parts as shown on the painting guide on page 1. Once these have dried, apply a coat of gloss to the cab, let dry and then place the decals as shown on page 1. After the decals are completely dry, apply dullcoat to the cab.

When everything is dry assemble using CA glue, follow the steps below.

### Final Assembly:

