

EAE-1015

Assembly Instructions For Z-Scale 1955 Chevy Truck Kit



www.eaelec.com
Made in Canada

This kit contains all parts needed to build 2 complete 1955 Chevy trucks: a 2 ton model 6100 (130 inch wheelbase) with custom bodywork for milk delivery and a 2 ton model 6400 (154 inch wheelbase) bucket truck for power line maintenance.

3D printed parts included in the kit:

- A. 1 long chassis (for bucket truck)
- B. 1 short chassis (for milk truck)
- C. 1 cab (for bucket truck)
- D. 1 milk truck body
- E. 1 bucket truck bed
- F. 1 bucket lift

Also included:

- G. 1 decal sheet.
- H. 1 photo etched ladder

Required to complete the kit:

Paint - see painting guide on pages 2.

Glue - Slow setting CA is best.

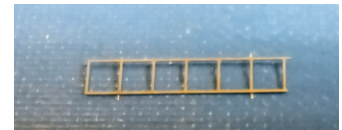
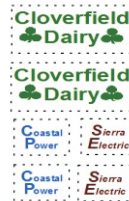
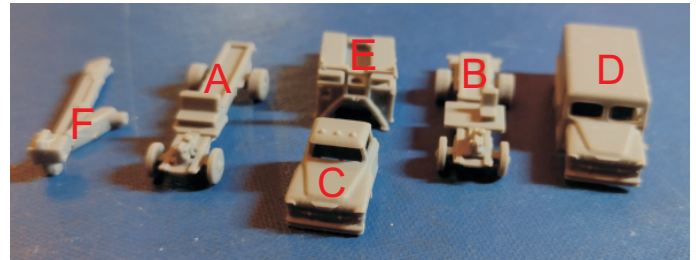
Tools -

1. X-acto knife with a sharp #11 blade.
2. #400 and #600 sandpaper.
3. photo-etch cutting shears

WARNING: CHOKING HAZARD Keep out of reach of small children!

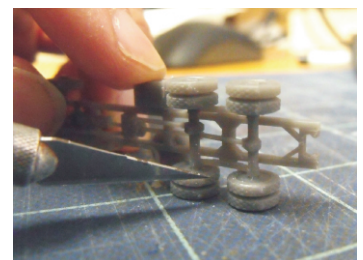
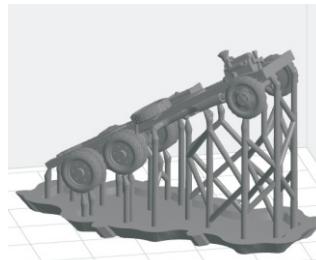
Note that these ARE NOT TOYS, AND ARE NOT INTENDED FOR USE BY CHILDREN UNDER AGE OF 14. These products are model railroad equipment and accessories intended for use by adults.

Parts In The Kit



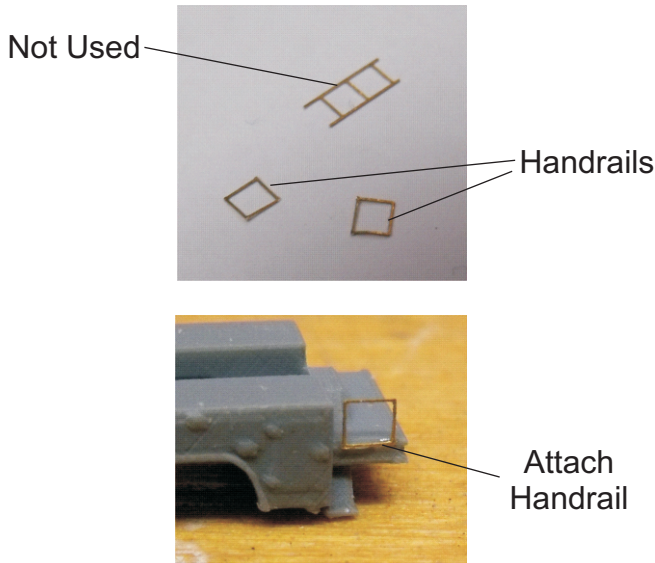
Step 1 - Clean-up 3D printed Parts

The 3D printing process requires a supporting frame during printing, see below left. The printed part is cut from the frame using flush cutters and this sometimes leaves small bumps on the part. Use a knife with a sharp new blade to cut away the bumps. When trimming bumps off the wheels you should place the wheel on a flat surface as shown below on the right. Putting too much stress on the wheel can cause the axle to break. For bumps on the cab body, sanding is recommended.



Step 2 - Attach Photo Etch

Cut the photo-etched ladder included into sections as shown in the first photo below. Two sections are used for the handrails on the rear of the bucket truck bed. Glue one section of railing to each side of the bucket bed with CA glue as shown in the second photo.



Step 3 - Painting

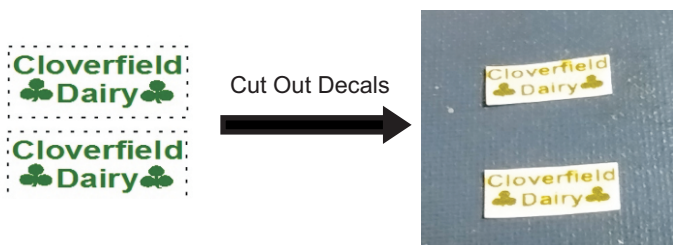
Paint the parts of the model as shown in the painting guide on the last page of these instructions.

Step 4 - Decals

Important -The decals must be cut apart (as shown below) just inside the dotted lines before immersing them in water. There are 2 sets of decals for the bucket truck, you have the choice of either using the "Coastal Power" or the "Sierra Electric" set.

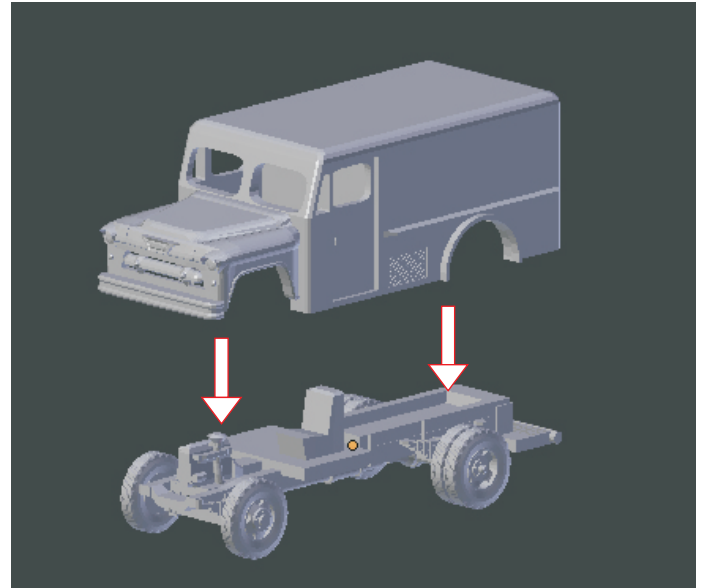
Decals should be applied to gloss finishes only. Flat finishes are rough and trap air under the decal. When applying decals to a flat finish use glosscoat before placing the decals then after the decals have dried use dullcoat to restore the flat finish.

Place decals as shown on the last page.



Step 5 - Assembly

Assemble the 2 models using CA glue.

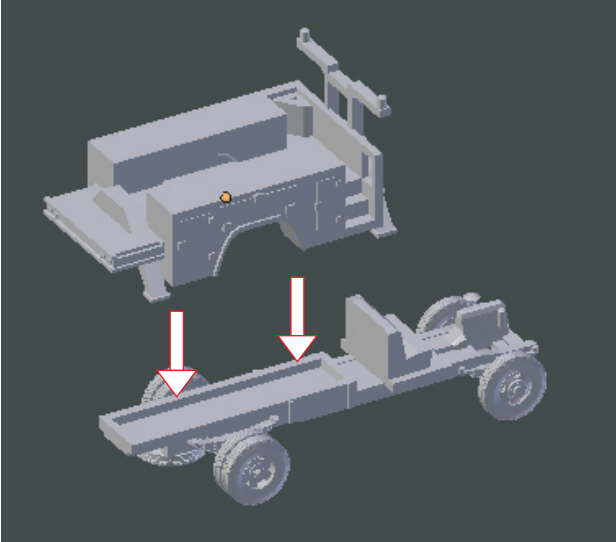


Attach the milk truck body to the SHORT chassis

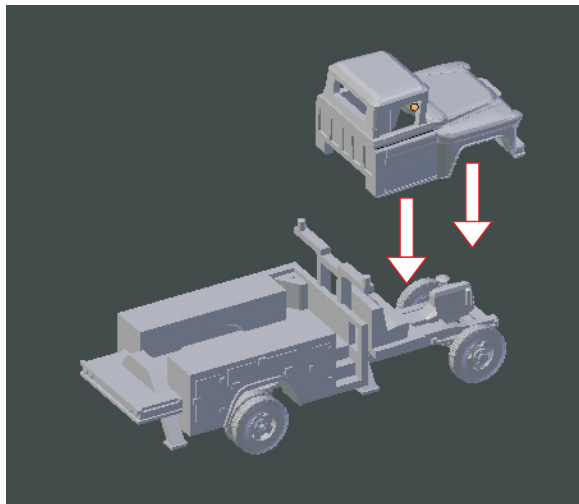


Milk truck assembly complete

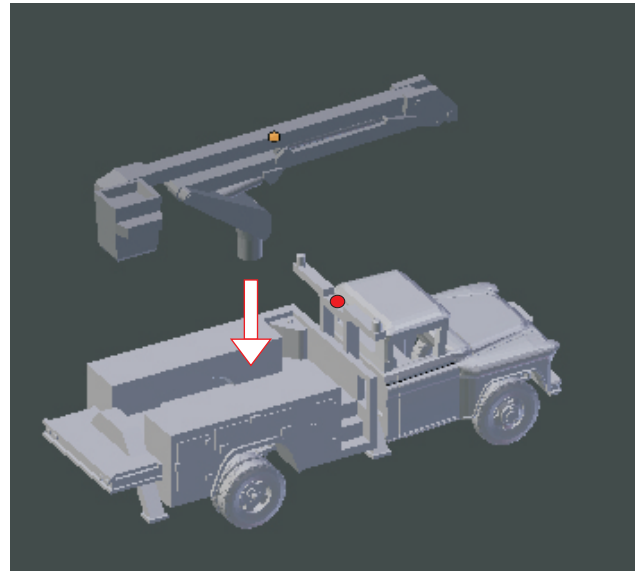
Step 5 - Assembly - Continued



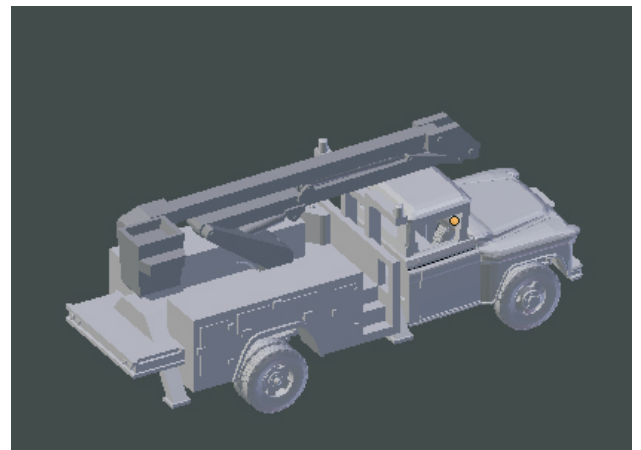
Attach the bucket bed to the LONG chassis



Attach the cab to the LONG chassis



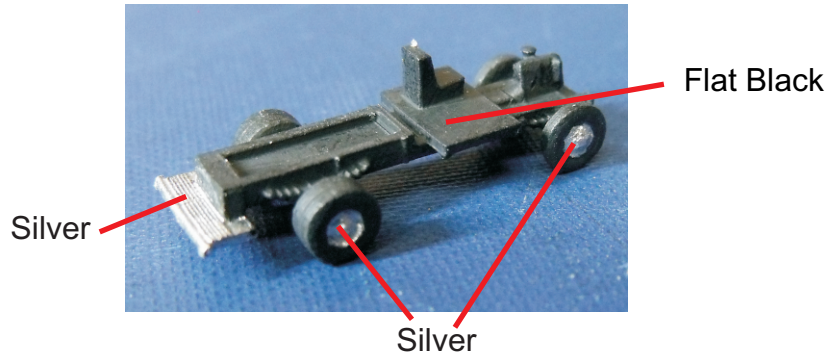
Place a tiny drop of CA glue where indicated by the red dot, then attach the bucket lift to the hole in the bed.



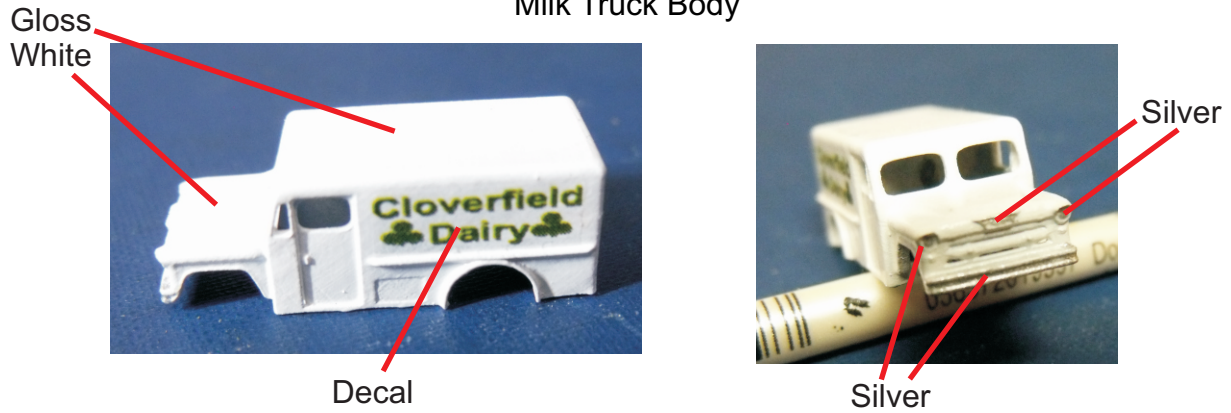
Bucket truck completed

Painting guide & Decal Placement

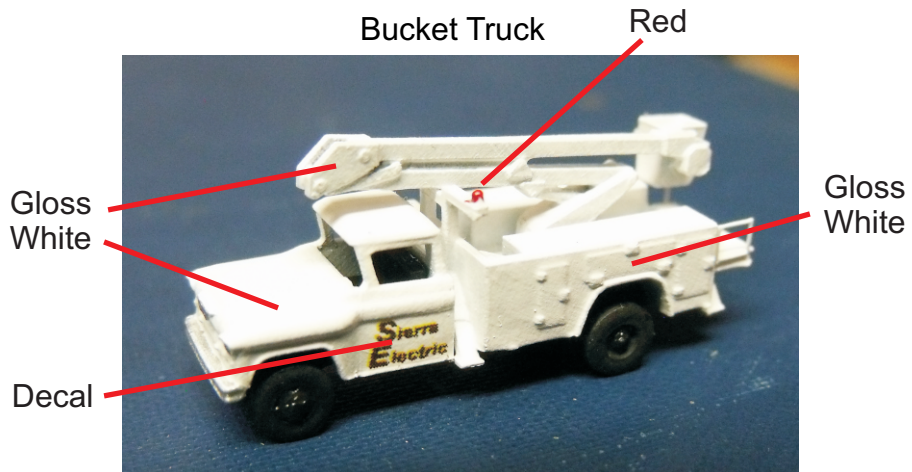
Milk Truck Chassis



Milk Truck Body



Bucket Truck



Note : Wheel hubs are gloss black, the rest of the chassis is flat black.

